

M90 Connectors

Male PC Tail Hot Shoe Connector

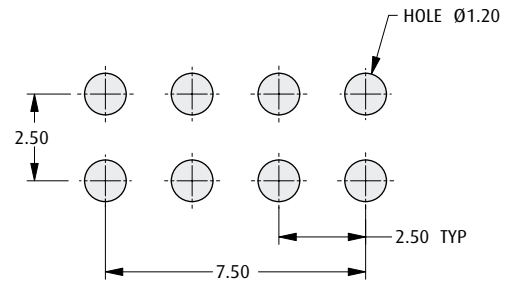
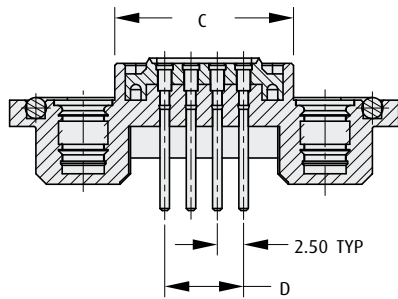
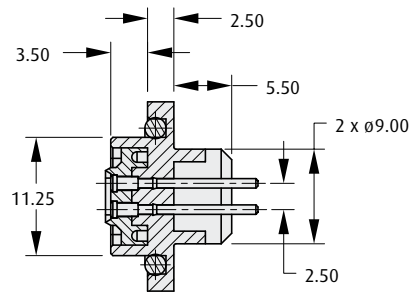
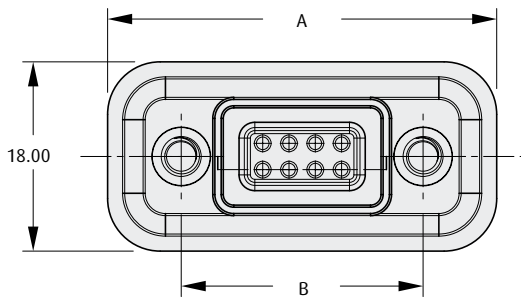
- ❖ Contact technical@harwin.com for alternative contact configurations and designs.
- ❖ Designed to mate with a spring probe connector – see page 125.



FIXED CONTACT ASSEMBLY

CALCULATION

A	$D + 29.5$
B	$D + 15.5$
C	$D + 9.5$
D	$2.5 \times (\text{total no. of contacts})$



Recommended PC Board Pattern

HOW TO ORDER

M90 - 701 XX 45

SERIES CODE

TYPE

FINISH

45

Gold



TOTAL NO. OF CONTACTS

08, 12, 16

All dimensions in mm.

www.harwin.com





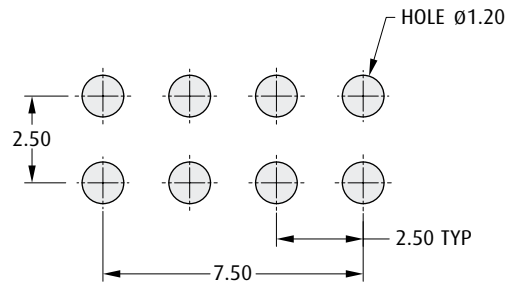
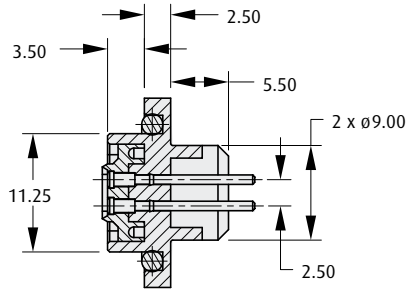
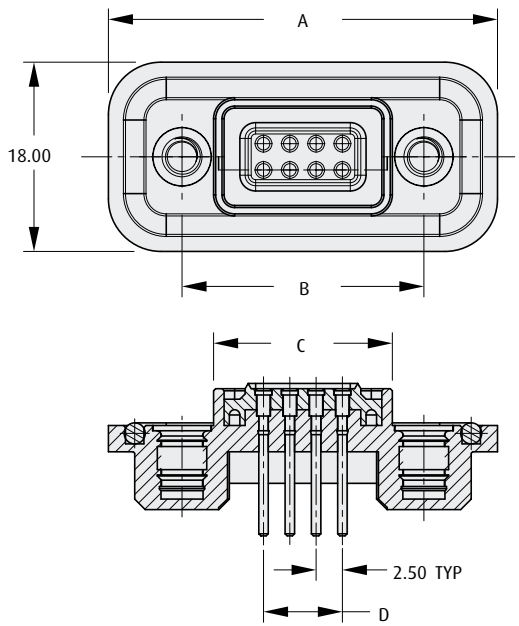
M90 Connectors

Female PC Tail Hot Shoe Connector

- ❖ Contact technical@harwin.com for alternative contact configurations and designs.
- ❖ Spring probe design for maintaining a positive force against the mating connector – see page 124.

SPRING PROBE ASSEMBLY

CALCULATION	
A	$D + 29.5$
B	$D + 15.5$
C	$D + 6.5$
D	$2.5 \times (\text{total no. of contacts})$



Recommended PC Board Pattern

HOW TO ORDER

M90 - 601 XX 45

SERIES CODE
TYPE

FINISH	
45	Gold

TOTAL NO. OF CONTACTS	
08, 12, 16	

www.harwin.com

All dimensions in mm.

