

EMC Shielding

Contents

Introduction

SMT Shielding Clips

Shielding Cans for SMT Clips

Spring Contacts

- Positive Stop

- C Style

- Extended C Style (Antenna)

- Box Style

- Multi-Directional

- Development Kit

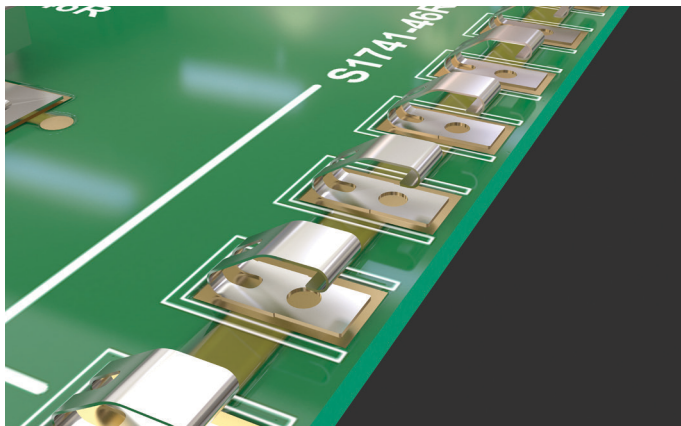
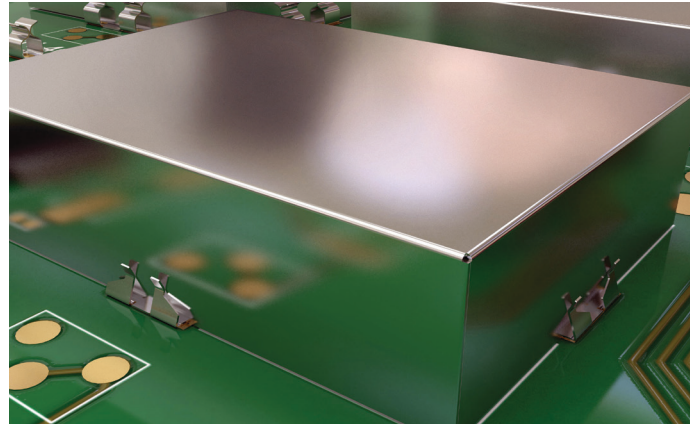


EMC Shielding Introduction

Harwin provides a range of Surface Mount Shield Clips, compatible Shield Cans, and a comprehensive selection of Spring Contacts, to solve a variety of EMC/RFI and grounding issues.

The Harwin combination of SMT Clips and Cans provide a simple and cost-effective method of shielding vulnerable or EMI radiating board components.

- ❖ No secondary manual soldering operations - Shield Cans quickly and easily slot into Clips.
- ❖ Potential hot-spots from manual soldering eliminated.
- ❖ Rework now easy without a de-soldering operation.



Spring Contacts (also known as Shield Fingers, Antenna or Grounding Contacts) are available in a choice of finish and wide array of styles.

- ❖ Heights from 1.23mm to 7.25mm in a variety of spring forces.
- ❖ Ideal for antenna feeds in mobile devices, LED lamp connections, grounding metal devices or single signal connections.
- ❖ All contacts are SMT, supplied in Tape and Reel packaging for simplified automated assembly and low production costs.

RFI Shield Clips Summary

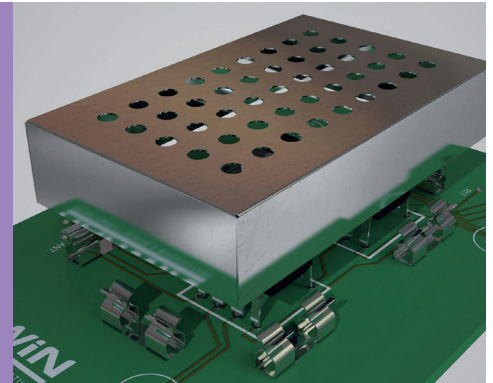
- ❖ Further dimensional information on the Shield Clips is available on the following pages.

Part No.	Type	Shield Thickness	Material	Finish	Pack Qty. on Ø330mm reel	Insertion Force (max)	Withdrawal Force (max)
S1411-46R	Maxi	0.70-1.00mm	Beryllium Copper	Tin	1,900	7N	0.8N
S1711-46R	Midi	0.17-0.30mm	Beryllium Copper	Tin	1,900	4N	0.5N
S2711-46R	Midi	0.17-0.30mm	Cupro-Nickel (Beryllium-free)	Tin	1,900	4N	0.5N
S0971-46R	Mini	0.20-0.30mm	Stainless Steel	Tin	5,000	19.6N	0.98N
S1721-46R	Mini	0.13-0.23mm	Beryllium Copper	Tin	5,000	5N	0.35N
S0941-46R	Micro	0.15-0.20mm	Stainless Steel	Tin	10,000	9.8N	0.69N
S0951-46R	Micro	0.20mm	Stainless Steel	Tin	10,000	9.8N	0.69N
S0961-46R	Micro	0.15-0.20mm	Stainless Steel	Tin	10,000	24.5N	0.98N
S0991-46R	Micro	0.20-0.25mm	Stainless Steel	Tin	15,000	19.6N	0.98N
S1001-46R	Micro	0.15-0.20mm	Stainless Steel	Tin	20,000	19.6N	0.98N
S0981-46R	Corner	0.20-0.25mm	Stainless Steel	Tin	6,000	19.6N	0.98N

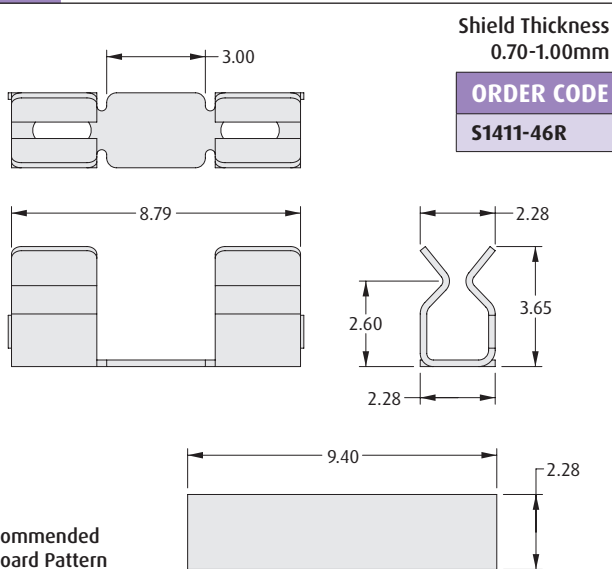
RFI Shield Clips

Shield Clips for EMI/RFI Shields

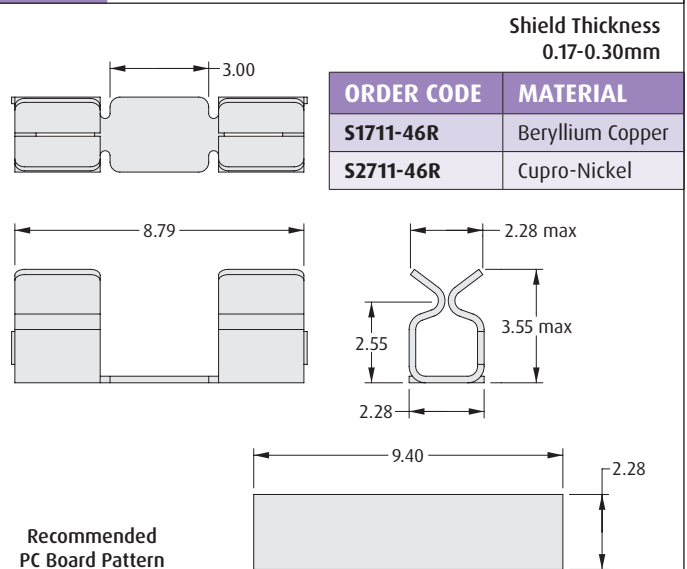
- ❖ SMT devices offering a fast solution for assembling RFI shields to PCBs.
- ❖ Eliminates the need for through holes and post reflow operations.
- ❖ Saves PCB real estate.
- ❖ Facilitates easy removal of the can for maintenance and repair.
- ❖ Substantial improvement in time and simplicity of assembly tuning and re-work.



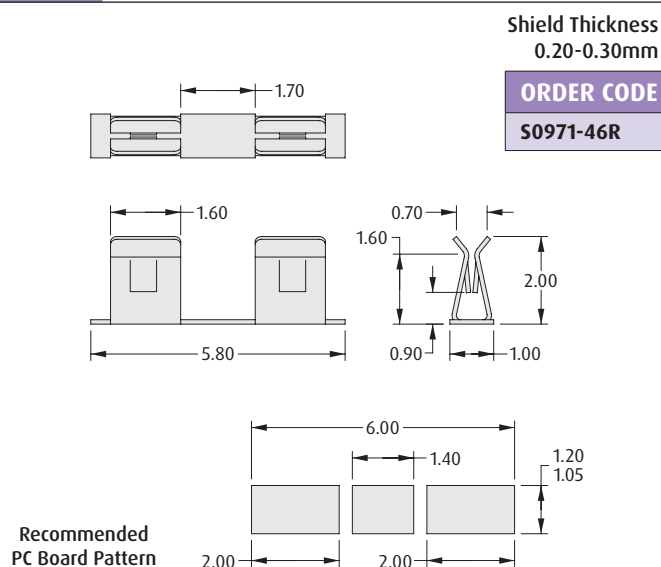
MAXI



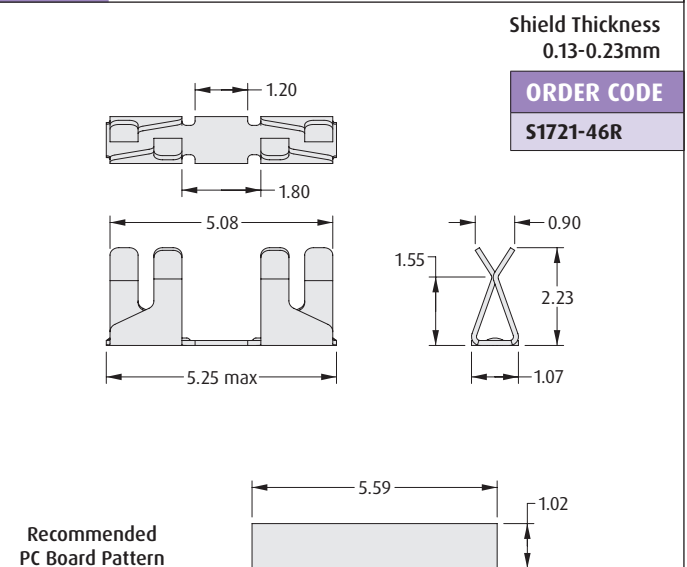
MIDI



MINI



MINI

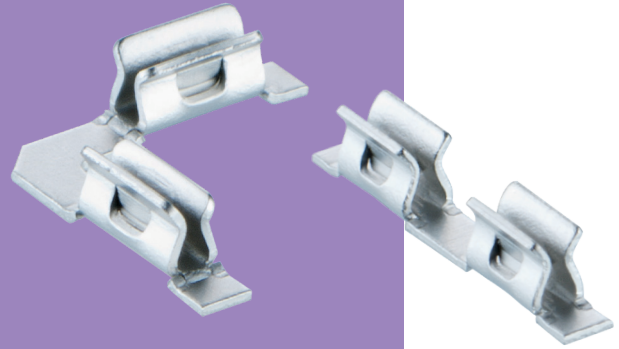


All dimensions in mm.

RFI Shield Clips

Shield Clips for EMI/RFI Shields

- ❖ Compatible with industry standard placement machines.
- ❖ Packaged in standard (EIA 481) Tape & Reel format.
- ❖ Spring contact design provides secure retention.
- ❖ Ideally suited to miniature electronics.
- ❖ Low profile and corner clips offer design flexibility.



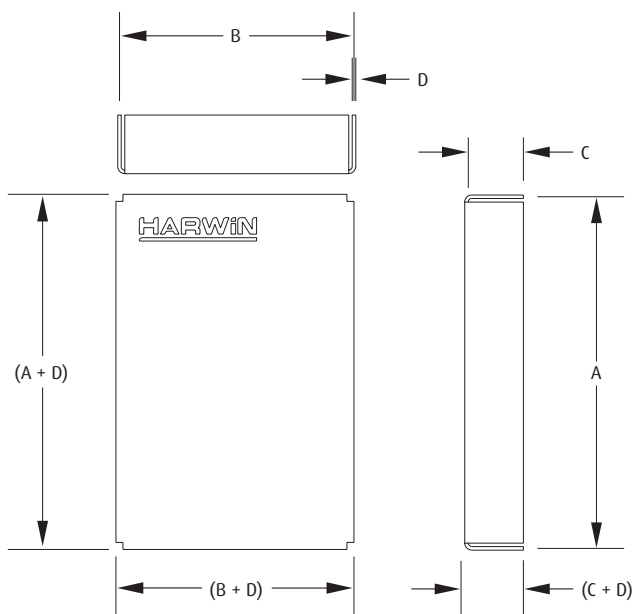
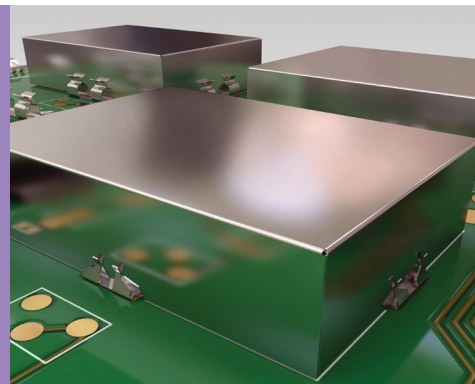
<p>MICRO</p> <p>ORDER CODE S0941-46R</p> <p>Shield Thickness 0.15-0.20mm</p> <p>Recommended PC Board Pattern</p>	<p>MICRO</p> <p>ORDER CODE S0951-46R</p> <p>Shield Thickness 0.20mm</p> <p>Recommended PC Board Pattern</p>
<p>MICRO</p> <p>ORDER CODE S0961-46R</p> <p>Shield Thickness 0.15-0.20mm</p> <p>Recommended PC Board Pattern</p>	<p>MICRO</p> <p>ORDER CODE S0991-46R</p> <p>Shield Thickness 0.20-0.25mm</p> <p>Recommended PC Board Pattern</p>
<p>MICRO</p> <p>ORDER CODE S1001-46R</p> <p>Shield Thickness 0.15-0.20mm</p> <p>Recommended PC Board Pattern</p>	<p>CORNER</p> <p>ORDER CODE S0981-46R</p> <p>Shield Thickness 0.20-0.25mm</p> <p>Recommended PC Board Pattern</p>

All dimensions in mm.

RFI Shield Cans

EMI/RFI Shielding

- ❖ 0.3mm thickness Shield Cans suitable for use with S1711, S2711 and S0971 Shield Clips.
- ❖ 0.2mm thickness Shield Cans suitable for use with most of the Harwin Shield Clips - check the chart on the introduction page.
- ❖ Provides excellent RFI and EMI protection to sensitive circuitry at the PCB level.
- ❖ Standard can sizes available from stock.



Materials

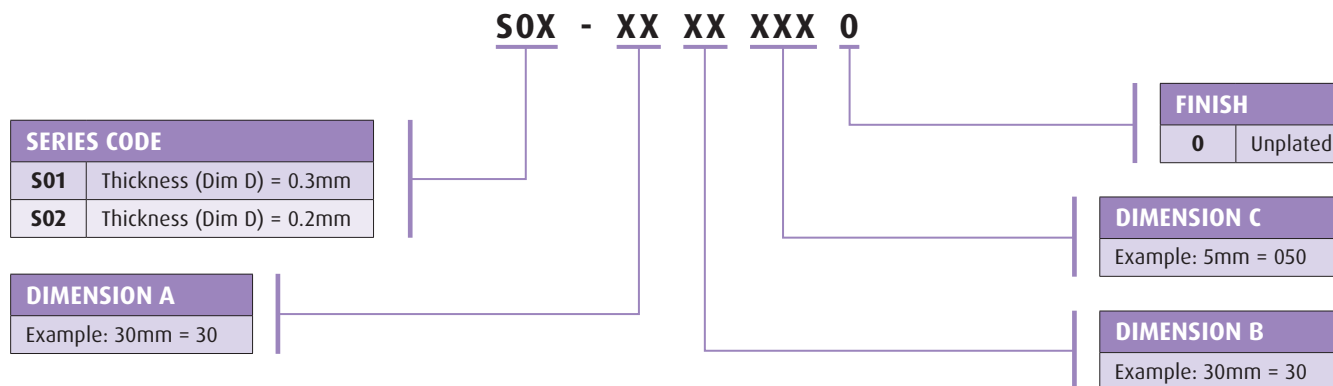
Material: Nickel Silver
Finish: Unplated

Standard Sizes

ORDER CODE	DIM A	DIM B	DIM C	DIM D
S01-30200500	30mm	20mm	5mm	0.3mm
S01-30300500	30mm	30mm	5mm	0.3mm
S01-50250500	50mm	25mm	5mm	0.3mm
S02-20150300	20mm	15mm	3mm	0.2mm
S02-25200300	25mm	20mm	3mm	0.2mm
S02-30200250	30mm	20mm	2.5mm	0.2mm

- ❖ Dimensions A and B are measured from the **CENTRE** of the material thickness.
- ❖ Dimension C is measured from the bottom edge to the **INSIDE** of the top face.

HOW TO ORDER

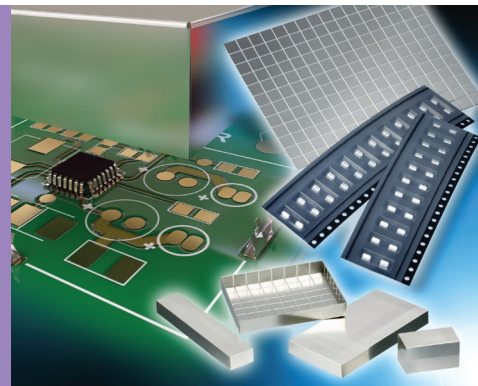


All dimensions in mm.

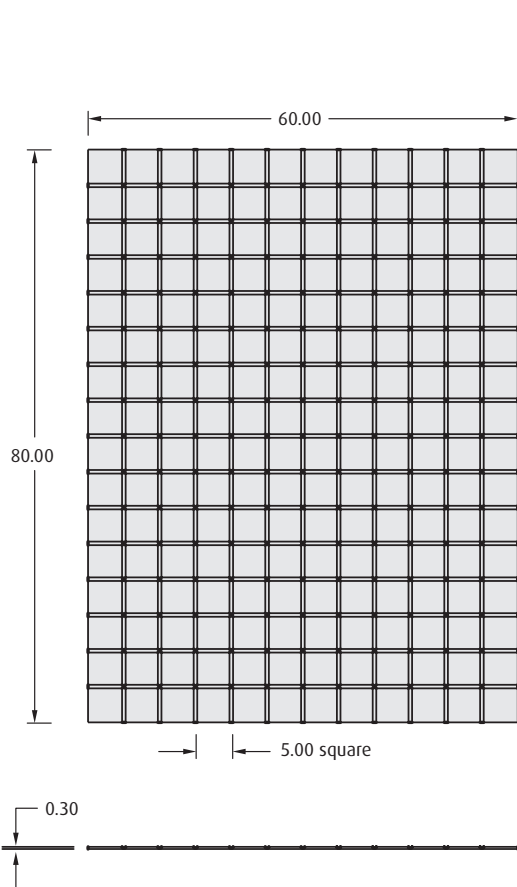
RFI Shield Can Kit

SMT Clips and Make-Your-Own Cans

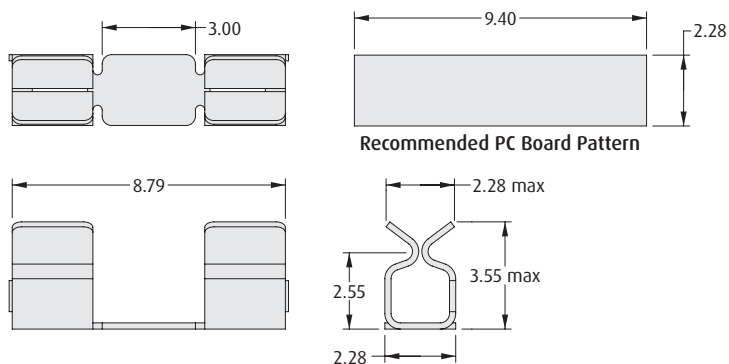
- ❖ Make your own Shield Cans in minutes, ideal for fast prototyping.
- ❖ Kit contains DIY Shield Can blanks, Shield retention clips and full instructions.
- ❖ Nickel Silver material for effective & useable shielding: up to 24dB attenuation achieved (frequency/configuration dependent).
- ❖ Shield Can is removable for adjustment.



SHIELD CAN KIT



2 x Shield Can Sheets
5mm pitch score lines, for folding



24 x Shield Clip S1711-46R



Instruction Sheet
(available from www.harwin.com/instructions)

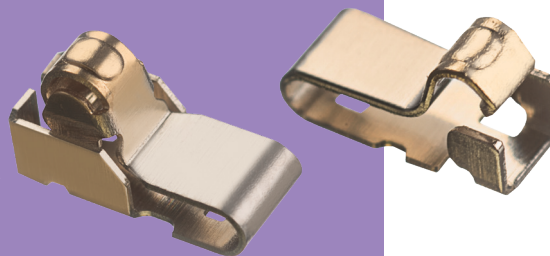
ORDER CODE
S01-806005KIT

All dimensions in mm.

Spring Contacts

Antenna Contacts with Positive Stop

- Extended beam miniature spring contacts, ultra-low profile.
- Ideal for antenna feed in mobile devices, LED lamp connections or RFID tags.
- Ultra-low connection system - free height from just 1.23mm to 2mm.
- Positive Stop to prevent over-compression and permanent set.
- Surface Mount with Pick and Place area for automated placement.



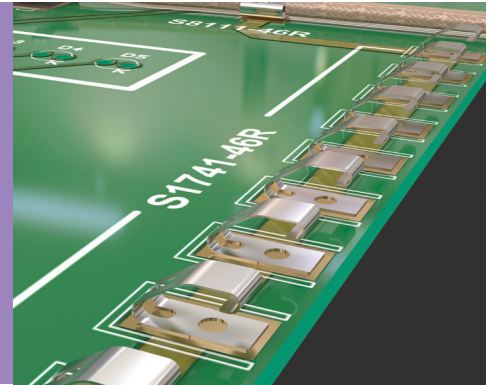
1.23mm HIGH <table border="1"> <thead> <tr> <th>ORDER CODE</th> <th>FINISH</th> </tr> </thead> <tbody> <tr> <td>S7221-45R</td> <td>Gold</td> </tr> </tbody> </table>	ORDER CODE	FINISH	S7221-45R	Gold	1.28mm HIGH <table border="1"> <thead> <tr> <th>ORDER CODE</th> <th>FINISH</th> </tr> </thead> <tbody> <tr> <td>S7231-45R</td> <td>Gold</td> </tr> </tbody> </table>	ORDER CODE	FINISH	S7231-45R	Gold
ORDER CODE	FINISH								
S7221-45R	Gold								
ORDER CODE	FINISH								
S7231-45R	Gold								
1.3mm HIGH <table border="1"> <thead> <tr> <th>ORDER CODE</th> <th>FINISH</th> </tr> </thead> <tbody> <tr> <td>S7241-45R</td> <td>Gold</td> </tr> </tbody> </table>	ORDER CODE	FINISH	S7241-45R	Gold	1.5mm HIGH, 1.5mm WIDE <table border="1"> <thead> <tr> <th>ORDER CODE</th> <th>FINISH</th> </tr> </thead> <tbody> <tr> <td>S7251-45R</td> <td>Gold</td> </tr> </tbody> </table>	ORDER CODE	FINISH	S7251-45R	Gold
ORDER CODE	FINISH								
S7241-45R	Gold								
ORDER CODE	FINISH								
S7251-45R	Gold								
1.5mm HIGH, 2mm WIDE <table border="1"> <thead> <tr> <th>ORDER CODE</th> <th>FINISH</th> </tr> </thead> <tbody> <tr> <td>S7261-45R</td> <td>Gold</td> </tr> </tbody> </table>	ORDER CODE	FINISH	S7261-45R	Gold	2mm HIGH <table border="1"> <thead> <tr> <th>ORDER CODE</th> <th>FINISH</th> </tr> </thead> <tbody> <tr> <td>S7271-45R</td> <td>Gold</td> </tr> </tbody> </table>	ORDER CODE	FINISH	S7271-45R	Gold
ORDER CODE	FINISH								
S7261-45R	Gold								
ORDER CODE	FINISH								
S7271-45R	Gold								

All dimensions in mm.

Spring Contacts

Grounding/RFI Contacts

- ❖ SMT devices for use in shielding and grounding applications.
- ❖ For use on surface mount PCBs, in contact with metal shields or frames.
- ❖ Suitable for both wiping and sliding actions.
- ❖ Ideal for automated requirements, using standard placement equipment.



<p>1.7mm HIGH</p> <p>Recommended PC Board Pattern</p> <table border="1"> <thead> <tr> <th>ORDER CODE</th> <th>FINISH</th> </tr> </thead> <tbody> <tr> <td>S7121-42R</td> <td>Gold</td> </tr> </tbody> </table>	ORDER CODE	FINISH	S7121-42R	Gold	<p>2.5mm HIGH</p> <p>Recommended PC Board Pattern</p> <table border="1"> <thead> <tr> <th>ORDER CODE</th> <th>FINISH</th> </tr> </thead> <tbody> <tr> <td>S1741-46R</td> <td>Tin</td> </tr> </tbody> </table>	ORDER CODE	FINISH	S1741-46R	Tin		
ORDER CODE	FINISH										
S7121-42R	Gold										
ORDER CODE	FINISH										
S1741-46R	Tin										
<p>2.7mm HIGH</p> <p>Recommended PC Board Pattern</p> <table border="1"> <thead> <tr> <th>ORDER CODE</th> <th>FINISH</th> </tr> </thead> <tbody> <tr> <td>S7091-42R</td> <td>Gold + Tin</td> </tr> </tbody> </table>	ORDER CODE	FINISH	S7091-42R	Gold + Tin	<p>3.5mm HIGH</p> <p>Recommended PC Board Pattern</p> <table border="1"> <thead> <tr> <th>ORDER CODE</th> <th>FINISH</th> </tr> </thead> <tbody> <tr> <td>S1761-42R</td> <td>Gold + Tin</td> </tr> <tr> <td>S1761-46R</td> <td>Tin</td> </tr> </tbody> </table>	ORDER CODE	FINISH	S1761-42R	Gold + Tin	S1761-46R	Tin
ORDER CODE	FINISH										
S7091-42R	Gold + Tin										
ORDER CODE	FINISH										
S1761-42R	Gold + Tin										
S1761-46R	Tin										
<p>4.0mm HIGH</p> <p>Recommended PC Board Pattern</p> <table border="1"> <thead> <tr> <th>ORDER CODE</th> <th>FINISH</th> </tr> </thead> <tbody> <tr> <td>S1791-42R</td> <td>Gold</td> </tr> </tbody> </table>	ORDER CODE	FINISH	S1791-42R	Gold	<p>5.6mm HIGH</p> <p>Recommended PC Board Pattern</p> <table border="1"> <thead> <tr> <th>ORDER CODE</th> <th>FINISH</th> </tr> </thead> <tbody> <tr> <td>S7061-42R</td> <td>Gold + Tin</td> </tr> <tr> <td>S7061-46R</td> <td>Tin</td> </tr> </tbody> </table>	ORDER CODE	FINISH	S7061-42R	Gold + Tin	S7061-46R	Tin
ORDER CODE	FINISH										
S1791-42R	Gold										
ORDER CODE	FINISH										
S7061-42R	Gold + Tin										
S7061-46R	Tin										

All dimensions in mm.

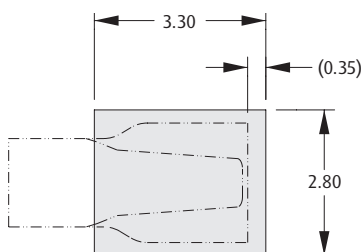
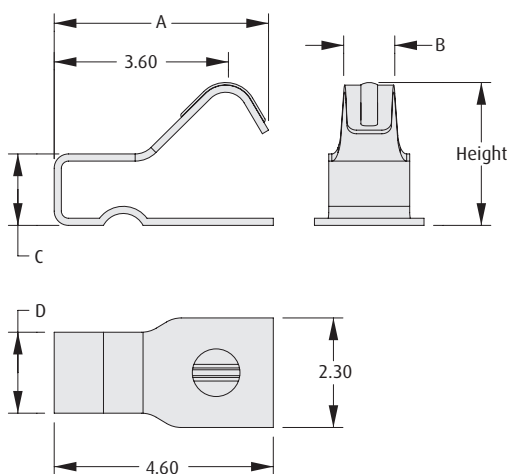
Spring Contacts

Extended Antenna Contacts

- ❑ Extended beam miniature spring contacts, ideal for antenna feed in mobile devices.
- ❑ Identical footprint contacts, with incremental step heights from 2mm to 5mm.
- ❑ Suitable for both wiping and sliding actions.
- ❑ Surface Mount with Pick and Place area for automated placement.
- ❑ Packaged in standard (EIA 481) Tape & Reel format.



EXTENDED ANTENNA CONTACTS



Recommended PC Board Pattern

HOW TO ORDER

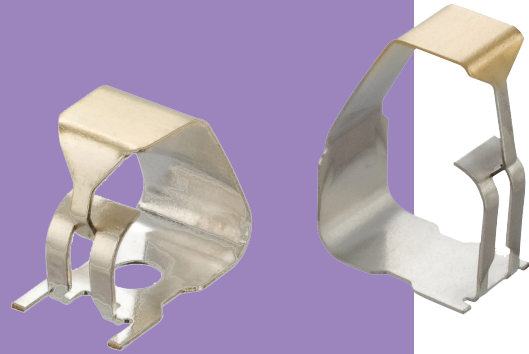
PART NO.	HEIGHT	DIM A	DIM B	DIM C	DIM D	FINISH
S7131-45R	2.00	4.30	0.80	1.00	1.55	Gold
S7141-45R	2.50	4.50	0.80	1.00	1.55	Gold
S7151-45R	3.00	4.50	0.90	1.50	1.70	Gold
S7161-45R	3.50	4.50	1.05	2.00	1.95	Gold
S7171-45R	4.00	4.50	1.36	2.50	2.30	Gold
S7181-45R	4.50	4.50	1.82	3.00	2.50	Gold
S7191-45R	5.00	4.50	2.08	3.50	3.00	Gold

All dimensions in mm.

Spring Contacts

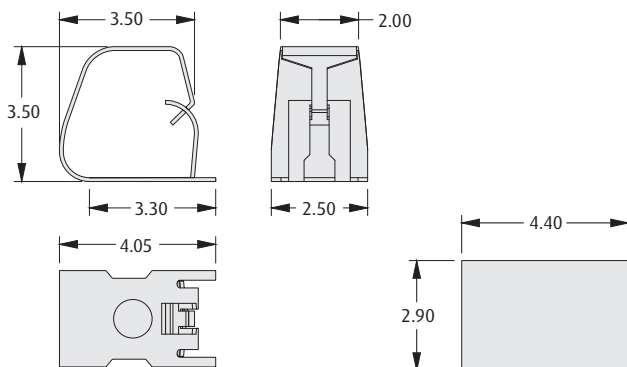
Grounding/RFI Contacts

- ❖ Prevents EMC noise and static.
- ❖ Simple and effective method for connecting multiple PCBs.
- ❖ No special tooling required, uses standard Pick and Place equipment.
- ❖ Protected tips prevent product from hooking.



EMC SHIELDING

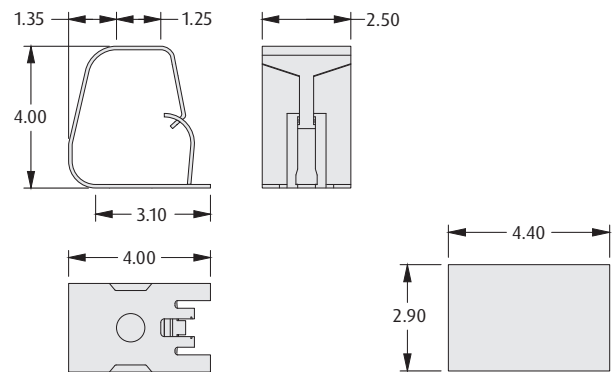
3.5mm HIGH



Recommended
PC Board Pattern

ORDER CODE	FINISH
S7101-42R	Gold + Tin

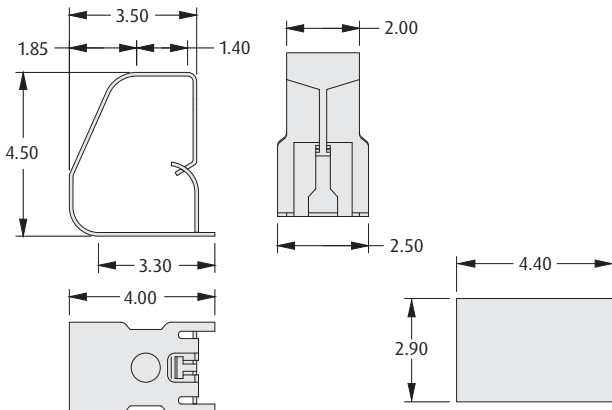
4.0mm HIGH



Recommended
PC Board Pattern

ORDER CODE	FINISH
S7041-42R	Gold + Tin

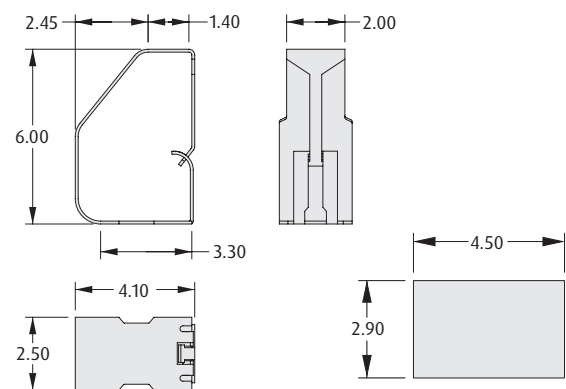
4.5mm HIGH



Recommended
PC Board Pattern

ORDER CODE	FINISH
S7111-42R	Gold + Tin

6.0mm HIGH



Recommended
PC Board Pattern

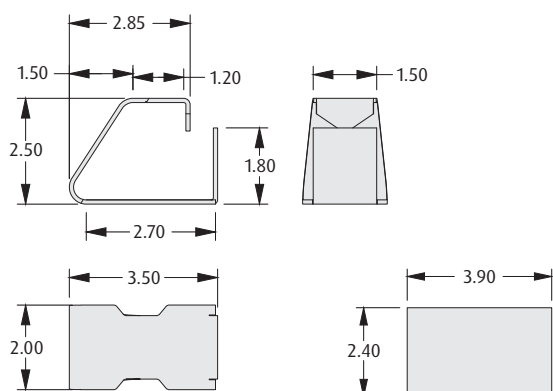
ORDER CODE	FINISH
S7051-42R	Gold + Tin

All dimensions in mm.

- ❖ Packaged in standard (EIA 481) Tape & Reel format.
- ❖ Spring contacts maintain a positive force and stable electrical contact.
- ❖ Small PCB footprint.
- ❖ Multi-Directional contacts can be used in either vertical or horizontal orientations.

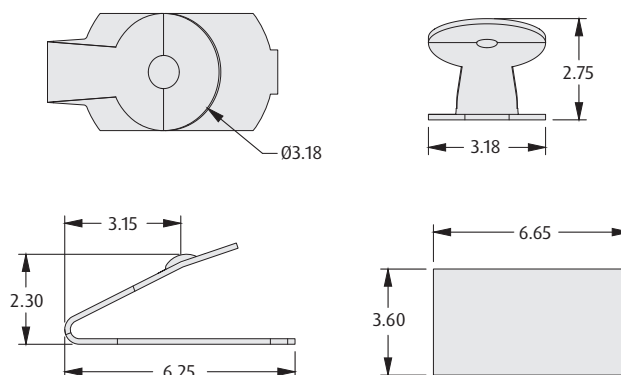


2.75mm HIGH



Recommended PC Board Pattern

ORDER CODE	FINISH
S7071-46R	Tin



Recommended PC Board Pattern

ORDER CODE	FINISH
S7081-42R	Gold + Tin

Technical drawings of the S1951 component showing dimensions and deflection points:

- Top View:** Shows a rectangular component with a rounded top-left corner. Dimensions include a total width of 6.57, a height of 7.25, and a distance of 4.45 from the bottom-left corner to the center of the rounded corner. A horizontal arrow labeled "Horizontal deflection" points to the right edge, and a vertical arrow labeled "Vertical deflection" points to the top edge.
- Side View:** Shows a cross-section of the component with a width of 3.50. A slot is present on the low force version (S1951), indicated by a dashed line and the text "Slot present on Low Force version (S1951)".
- Bottom View:** Shows a cross-section of the component with a width of 9.59 and a height of 5.70. It features a central slot and rounded corners.

Recommended PC Board Pattern

ORDER CODE	TYPE	FINISH
S1941-42R	Normal Force	Gold + Tin
S1941-46R	Normal Force	Tin
S1951-46R	Low Force	Tin

HARWIN

Spring Contacts

Development Kit

- ❖ Selection of 16 different Spring Contacts in one box.
- ❖ Ideal for prototyping on new projects.
- ❖ Free refills available on all Spring Contacts.
- ❖ For individual contact details, see previous catalog pages or search for the part number on www.harwin.com.



- ❖ External box dimensions are 338mm x 261mm, 57mm high
- ❖ Free refills available - registration card included with each box with further details on claiming your spring contact replacements.



❖ Box Contents

ORDER CODE	CONTACT STYLE	QUANTITY
S7221-45R	Positive Stop	20
S7271-45R	Positive Stop	20
S7121-42R	C Style	20
S1741-46R	C Style	20
S1761-42R	C Style	20
S1761-46R	C Style	20
S1791-42R	C Style	20
S7061-42R	C Style	20
S7061-46R	C Style	20
S7131-45R	Extended Antenna	20
S7161-45R	Extended Antenna	20
S7101-42R	Box Style	20
S7051-42R	Box Style	20
S7071-46R	C/Box Style	20
S7081-42R	Point Contact	20
S1941-46R	Multi-Direction	20

ORDER CODE
DEV-001

All dimensions in mm.