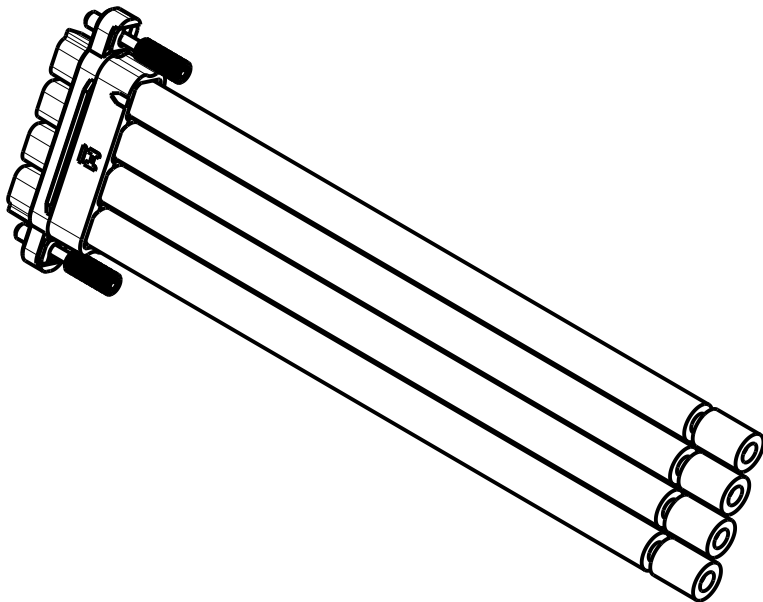


# Customer Information Sheet

DRAWING No.: KAI-XXXX-X-XXXXXLXX	IF IN DOUBT - ASK	©	NOT TO SCALE	THIRD ANGLE PROJECTION	ALL DIMENSIONS IN mm
----------------------------------	-------------------	---	--------------	------------------------	----------------------

TABLE 1: CONFIGURATIONS & BILL OF MATERIALS															
ORDER CODE CONFIGUARATIONS													BOM ITEM NO.		
KAI-XSVX-X-XXXXALXX													1	2	3
													CONNECTOR (SEE ORDER CODE FOR TOTAL NUMBER OF CONTACTS)	CONNECTOR CONTACT (SEE ORDER CODE FOR QTY).	WIRE
KAI	-	F	S	V	1 2	-	X	-	XXXX	A	L	BLANK XX	KAI-201XX98F1 KAI-201XX98F2	KAI-0400005	8AWG SILICONE WIRE (SEE NOTE 2)
		M			1 3 5								KAI-301XX98M1 KAI-301XX98M3 KAI-301XX98M5	KAI-1410005	



ORDER CODE:

KAI-XSVX-X-XXXXALXX

GENDER:  
MALE  
FEMALE

CONTACT TERMINANTION:  
S = SOLDER CUP

CONTACT STYLE:  
V = VERTICAL

FIXING TYPE:  
1 = F1& M1  
2 = F2  
3 = M3  
5 = M5

TOTAL NO. CONTACTS:  
2, 3, 4

DIM 'B'  
STRIPPED ENDS:  
BLANK = BLUNT CUT  
05 = 5mm MIN  
99 = 99mm MAX

WIRE COLOUR:  
WHITE = A

DIM 'A' LENGTH:  
0100 = 100MM MIN  
9999 = 9999MM MAX

- NOTES:
- 1. CABLE ASSEMBLIES ARE BULK PACKED IN BAGS.
  - 2. FOR COMPLETE SPECIFICATION, INCLUDING WIRE TYPE AND GAUGE SEE COMPONENT SPECIFICATIONS C052XX & C049XX (LATEST ISSUE).
  - 3. CUSTOM LENGTH CABLE ASSEMBLIES CAN BE PRODUCED FROM 100mm TO 9999mm.
  - 4. CONTACT EXTRACTION TOOL = ZAI-904.
  - 5. FOR FIXING IDENTIFICATION SEE SHEET 6.
  - 6. FOR CABLE CONFIGURATIONS SEE SHEET 5.

HARWIN

[www.harwin.com](http://www.harwin.com)  
[technical@harwin.com](mailto:technical@harwin.com)

THIS DRAWING AND ANY INFORMATION OR DESCRIPTIVE MATTER SET OUT HEREON ARE CONFIDENTIAL AND COPYRIGHT PROPERTY OF THE HARWIN GROUP AND MUST NOT BE DISCLOSED, LOANED, COPIED OR USED FOR MANUFACTURING, TENDERING OR FOR ANY OTHER PURPOSE WITHOUT THEIR WRITTEN PERMISSION.

TOLERANCES  
X. =  $\pm 1\text{mm}$   
X.X =  $\pm 0.50\text{mm}$   
X.XX =  $\pm 0.20\text{mm}$   
X.XXX =  $\pm 0.01\text{mm}$   
  
ANGLES =  $\pm 5^\circ$   
  
UNLESS STATED

MATERIAL:  
  
SEE TABLE 1

FINISH: -

S/AREA: - mm<sup>2</sup>

TITLE:  
KONA SERIES SINGLE ENDED  
CABLE ASSEMBLY

DRAWING NUMBER:  
KAI-XXXX-X-XXXXXLXX

SHT  
4 OF 6

FC	I	23.08.22	31804
NAME	ISS.	DATE	CN/CO
APPROVED: S.BENNETT			
CHECKED: R.PORTLOCK			
DRAWN: F.CHRISPINE			
CUSTOMER REF.:			
ASSEMBLY DRG:			
-			

# Customer Information Sheet

DRAWING No.: KAI-XXXX-X-XXXXXLXX

IF IN DOUBT - ASK

©

NOT TO SCALE

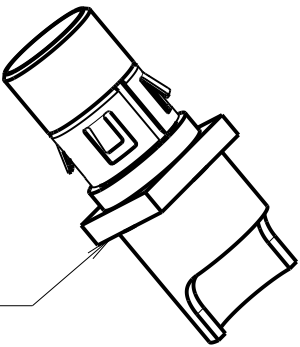
THIRD ANGLE PROJECTION

ALL DIMENSIONS IN mm

EXAMPLE PART  
KAI-FSVI-4-XXXXALXX

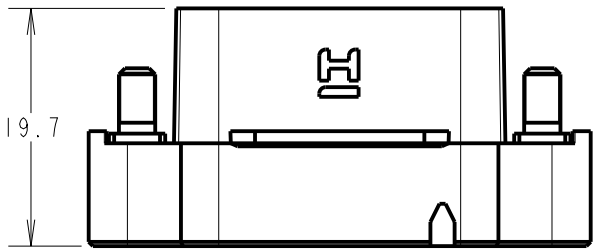
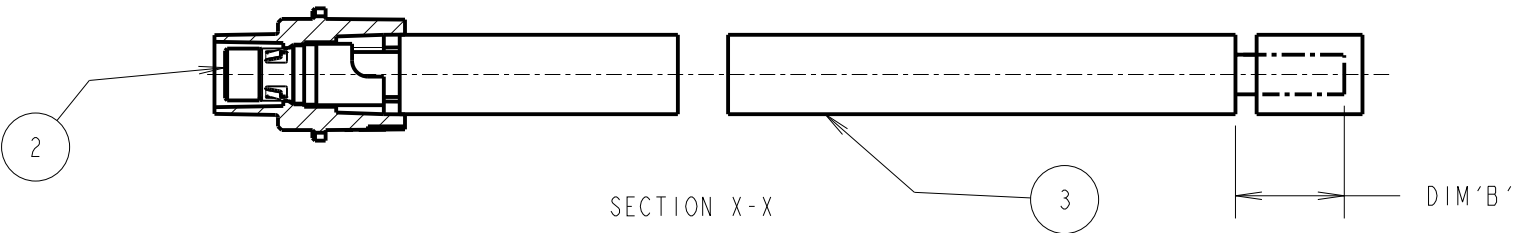
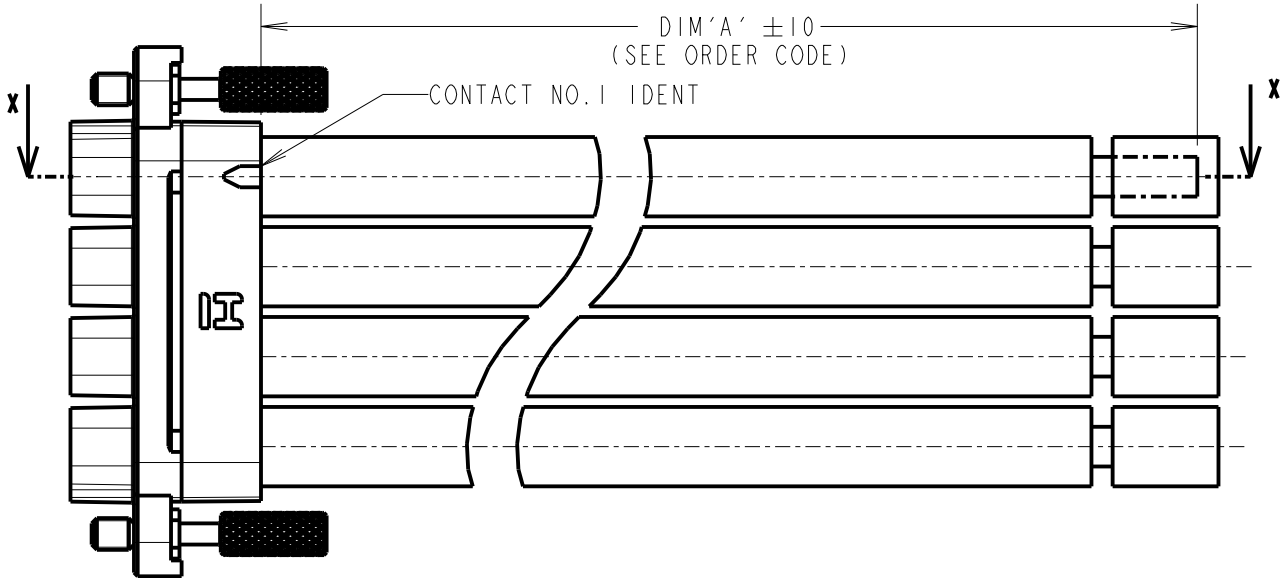
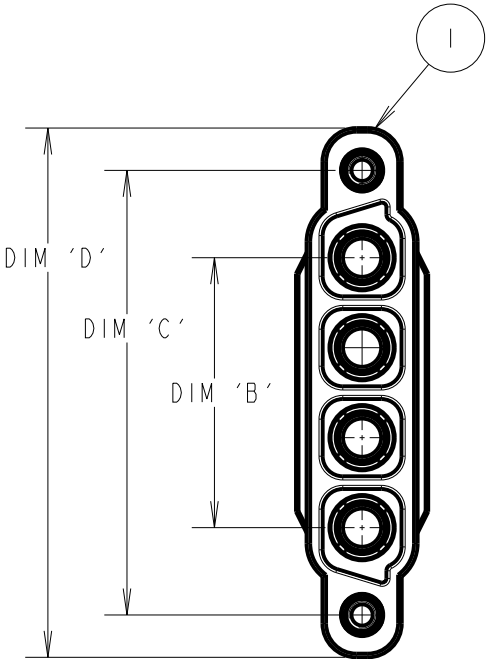
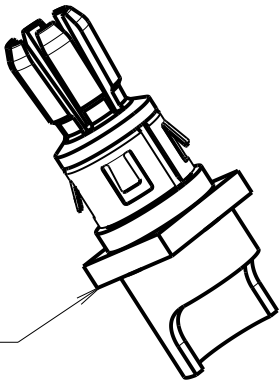
FEMALE CONTACT:

KAI-0400005

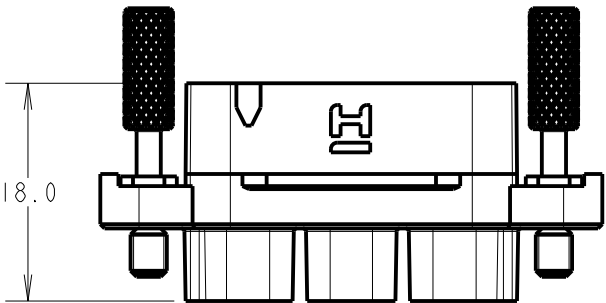


MALE CONTACT:

KAI-1410005



MALE



FEMALE

ORDER CODE:

**KAI-XSVX-X-XXXXALXX**

GENDER:  
MALE  
FEMALE

CONTACT TERMINATION:  
S = SOLDER CUP

CONTACT STYLE:  
V = VERTICAL

FIXING TYPE:  
1 = FI & MI  
2 = F2  
3 = M3  
5 = M5

TOTAL NO. CONTACTS:  
2, 3, 4

DIM 'B'  
STRIPPED ENDS:  
BLANK = BLUNT CUT  
05 = 5mm MIN  
99 = 99mm MAX

WIRE COLOUR:  
WHITE = A

DIM 'A' LENGTH:  
0100 = 100MM MIN  
9999 = 9999MM MAX

TABLE 1: DIMENSIONS

DIMENSION	MEASUREMENT
DIM 'B'	(TOTAL No. CONTACTS - 1) x 8.5
DIM 'C'	(TOTAL No. CONTACTS - 1) x 8.5 + 16.5
DIM 'D'	(TOTAL No. CONTACTS - 1) x 8.5 + 24.5

**HARWIN**

www.harwin.com  
technical@harwin.com

THIS DRAWING AND ANY  
INFORMATION OR DESCRIPTIVE  
MATTER SET OUT HEREON ARE  
CONFIDENTIAL AND COPYRIGHT  
PROPERTY OF THE HARWIN  
GROUP AND MUST NOT BE  
DISCLOSED, LOANED, COPIED  
OR USED FOR MANUFACTURING,  
TENDERING OR FOR ANY  
OTHER PURPOSE WITHOUT  
THEIR WRITTEN PERMISSION.

TOLERANCES

X. = ±1mm  
X.X = ±0.50mm  
X.XX = ±0.20mm  
X.XXX = ±0.01mm

ANGLES = ±5°

UNLESS STATED

MATERIAL:

SEE SHEET 4

FINISH:

-

S/AREA:

-

mm<sup>2</sup>

TITLE:

KONA SERIES SINGLE ENDED  
CABLE ASSEMBLY

DRAWING NUMBER:

**KAI-XXXX-X-XXXXXLXX**

SHT

5 OF 6

FC	I	23.08.22	31804
NAME	ISS.	DATE	CN/CO
APPROVED: S.BENNETT			
CHECKED: R.PORTLOCK			
DRAWN: F.CHRISPINE			
CUSTOMER REF.:			
ASSEMBLY DRG:			

Customer Information Sheet

DRAWING No.: KAI-XXXX-X-XXXXXLXX

IF IN DOUBT - ASK

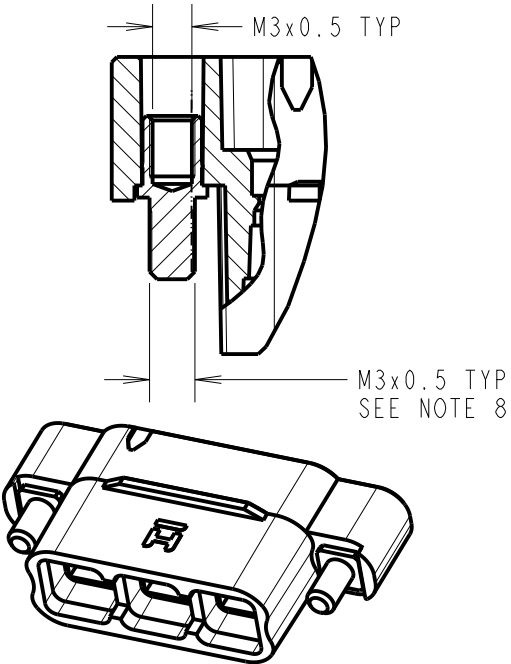
©

NOT TO SCALE

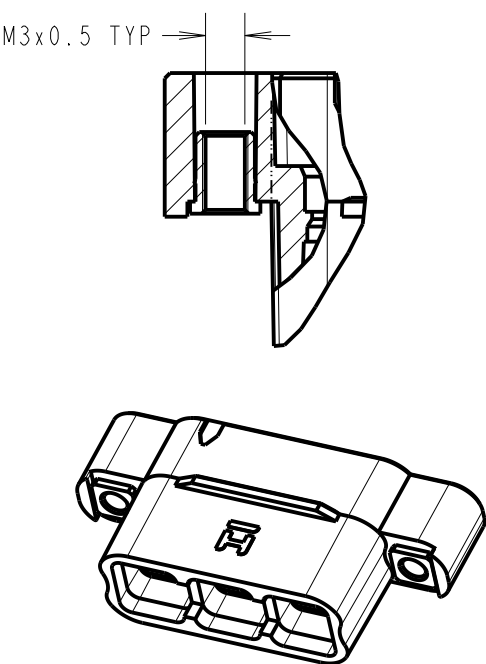
THIRD ANGLE PROJECTION

ALL DIMENSIONS IN mm

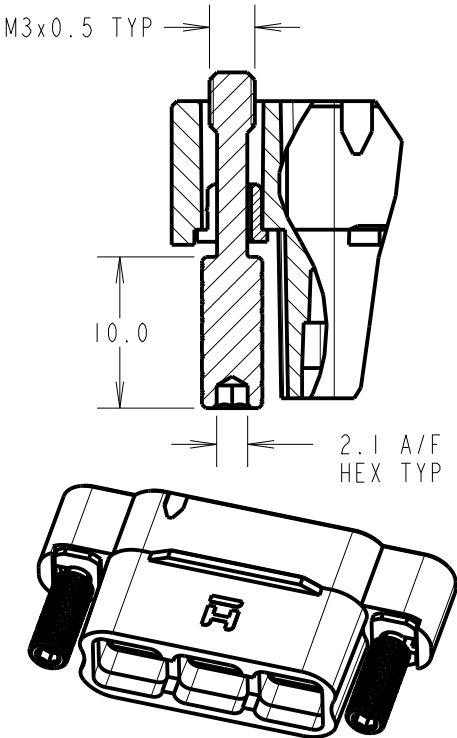
MALE FIXING TYPES



M1

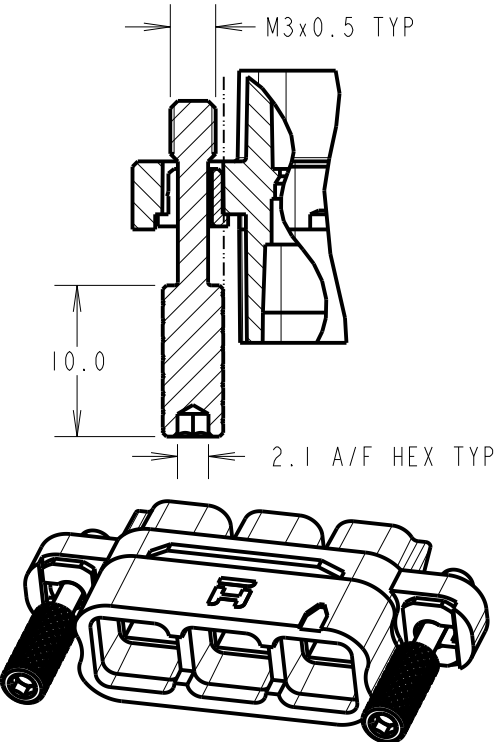


M3

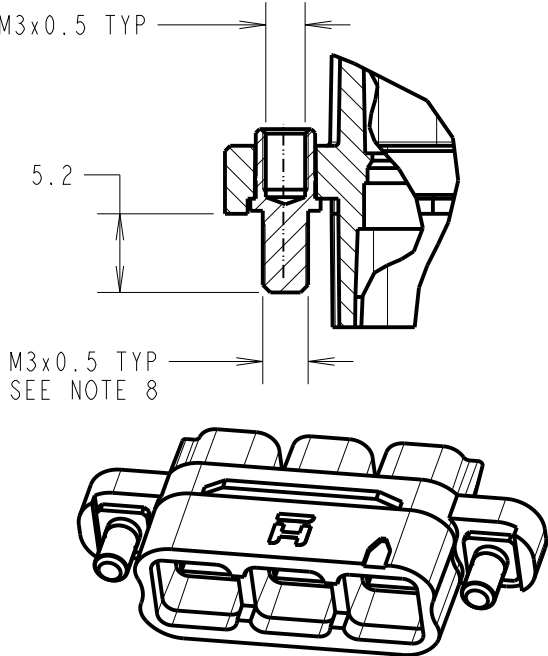


M5

FEMALE FIXING TYPES



F1



F2

ORDER CODE:

KAI-XSVX-X-XXXXALXX

GENDER:  
MALE  
FEMALE

CONTACT TERMINANTION:  
S = SOLDER CUP

CONTACT STYLE:  
V = VERTICAL

FIXING TYPE:  
1 = F1& M1  
2 = F2  
3 = M3  
5 = M5

TOTAL NO. CONTACTS:  
2,3,4

DIM 'B'  
STRIPPED ENDS:  
BLANK = BLUNT CUT  
05 = 5mm MIN  
99 = 99mm MAX

WIRE COLOUR:  
WHITE = A

DIM 'A' LENGTH:  
0100 = 100MM MIN  
9999 = 9999MM MAX

NOTES:  
7. SEE BILL OF MATERIALS TABLE ON SHEET 4 AND ORDER CODE FOR FIXING IDENTIFICATION.  
8. FOR PANEL MOUNT NUTS ORDER SEPARATELY PART NUMBER: KAI-42400,00 ROUND SLOTTED NUT - BAG OF 20.

HARWIN

www.harwin.com  
technical@harwin.com

THIS DRAWING AND ANY INFORMATION OR DESCRIPTIVE MATTER SET OUT HEREON ARE CONFIDENTIAL AND COPYRIGHT PROPERTY OF THE HARWIN GROUP AND MUST NOT BE DISCLOSED, LOANED, COPIED OR USED FOR MANUFACTURING, TENDERING OR FOR ANY OTHER PURPOSE WITHOUT THEIR WRITTEN PERMISSION.

TOLERANCES  
X. = ±1mm  
X.X = ±0.50mm  
X.XX = ±0.20mm  
X.XXX = ±0.01mm  
ANGLES = ±5°  
UNLESS STATED

MATERIAL:  
SEE SHEET 4

FINISH: -

S/AREA: - mm<sup>2</sup>

TITLE:  
KONA SERIES SINGLE ENDED CABLE ASSEMBLY

DRAWING NUMBER:  
KAI-XXXX-X-XXXXXLXX

SHT  
6 OF 6

FC	I	23.08.22	31804
NAME	ISS.	DATE	CN/CO
APPROVED: S.BENNETT			
CHECKED: R.PORTLOCK			
DRAWN: F.CHRISPINE			
CUSTOMER REF.:			
ASSEMBLY DRG:			