

# Customer Information Sheet

DRAWING No.: M80-4000000F5-06-327-00-000

SHEET 2 OF 2

IF IN DOUBT - ASK

©

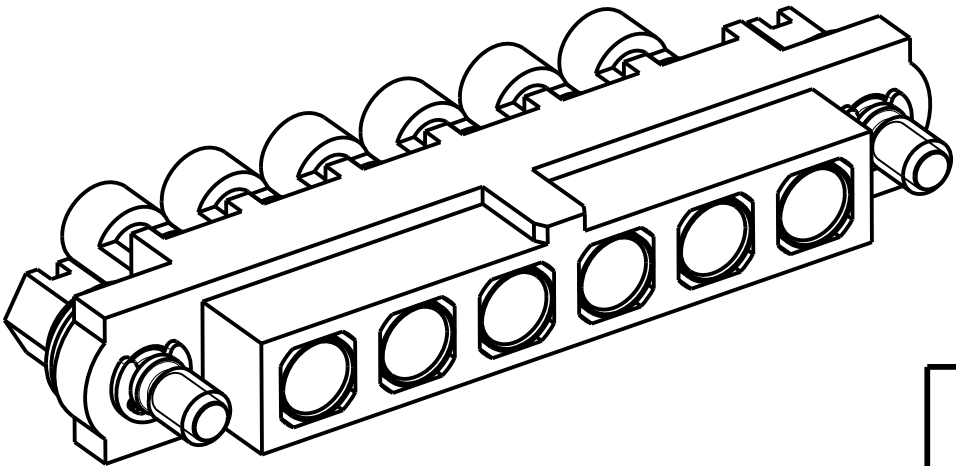
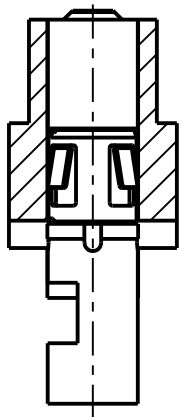
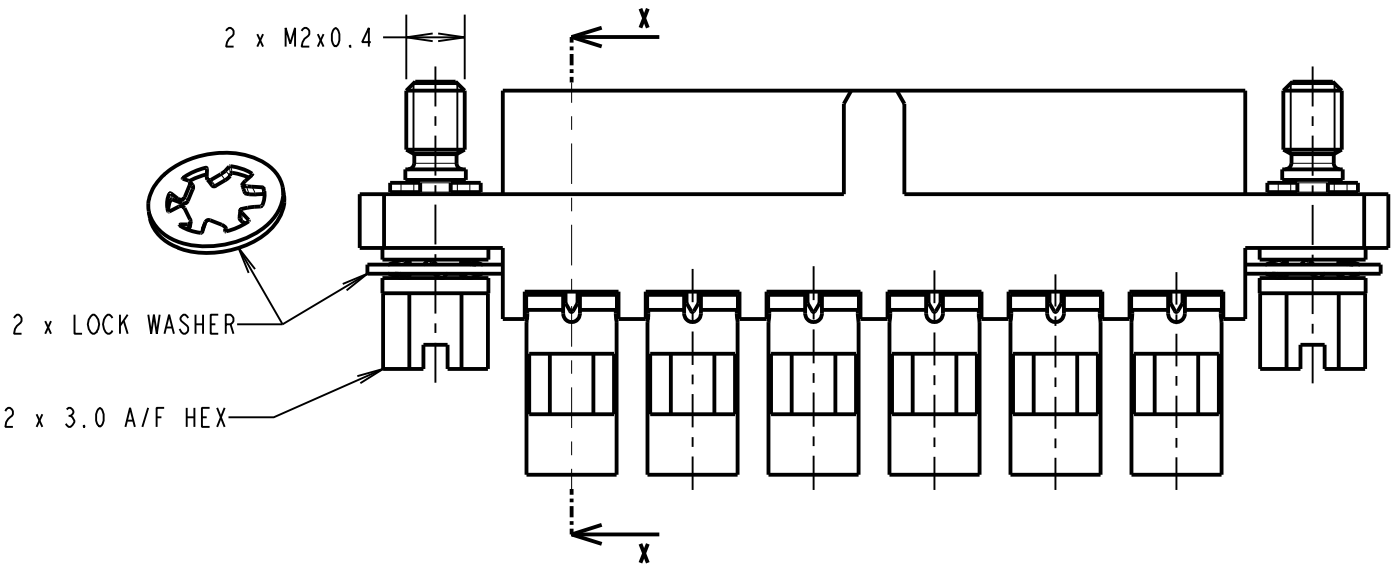
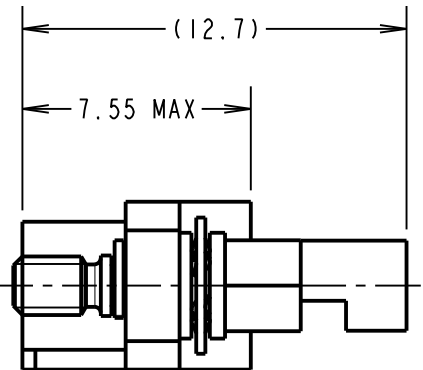
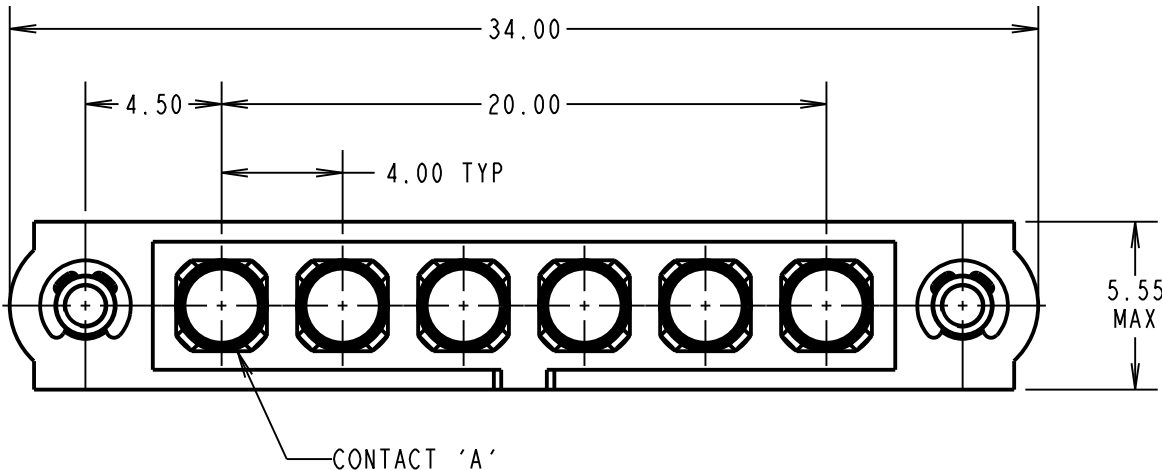
NOT TO SCALE

THIRD ANGLE PROJECTION

ALL DIMENSIONS IN mm

## SPECIFICATIONS:

**MATERIAL:**  
MOULDING: GLASS FILLED PPS, UL94V-0, BLACK  
**POWER CONTACT:**  
BODY = COPPER ALLOY  
LATCHING COLLAR = BERYLLIUM COPPER  
JACKSCREW, CIRCLIP, WASHER: STAINLESS STEEL  
**FINISH:**  
**POWER CONTACT:**  
BODY = GOLD OVER NICKEL  
LATCHING COLLAR = NICKEL  
**ELECTRICAL:**  
WORKING VOLTAGE = 800V AC/DC  
VOLTAGE PROOF = 1200V AC/DC  
INSULATION RESISTANCE = 100M $\Omega$  MIN  
**POWER CONTACT:**  
CONTACT RESISTANCE = 6m $\Omega$  MAX  
CURRENT RATING = 10A MAX WITH 16AWG  
CONTACT AS SPECIFIED  
**MECHANICAL:**  
DURABILITY = 500 OPERATIONS  
**POWER CONTACT:**  
INSERTION FORCE = 8N MAX  
WITHDRAWAL FORCE = 0.5N MIN  
**ENVIRONMENTAL:**  
TEMPERATURE RANGE = -55°C TO +125°C  
**PACKING:**  
BAG  
FOR COMPLETE SPECIFICATION SEE COMPONENT  
SPECIFICATION C005XX (LATEST ISSUE)



- NOTES:
1. CONNECTORS ARE SUPPLIED WITH CONTACTS LOOSE.
  2. FOR EXTRA POWER CONTACTS, USE PART NUMBER M80-327.
  3. POWER CONTACT WIRE, STRIP BY 5.00mm MINIMUM.
  4. POWER CONTACT EXTRACTION TOOL = Z80-290.
  5. INSTRUCTION SHEETS ARE AVAILABLE.

MGP	2	23.12.14	12757
NAME	ISS.	DATE	C/NOTE
APPROVED: MGP			
CHECKED: SB			
DRAWN: M.G.PLESTED			
CUSTOMER REF.:			
ASSEMBLY DRG:			

**HARWIN**  
www.harwin.com  
technical@harwin.com

THIS DRAWING AND ANY  
INFORMATION OR DESCRIPTIVE  
MATTER SET OUT HEREON ARE  
CONFIDENTIAL AND COPYRIGHT  
PROPERTY OF THE HARWIN  
GROUP AND MUST NOT BE  
DISCLOSED, LOANED, COPIED  
OR USED FOR MANUFACTURING,  
TENDERING OR FOR ANY  
OTHER PURPOSE WITHOUT  
THEIR WRITTEN PERMISSION.

**TOLERANCES**  
X. =  $\pm 1$ mm  
X.X =  $\pm 0.50$ mm  
X.XX =  $\pm 0.10$ mm  
X.XXX =  $\pm 0.01$ mm  
ANGLES =  $\pm 5^\circ$   
UNLESS STATED

**MATERIAL:**

SEE ABOVE

**FINISH:** SEE ABOVE

**S/AREA:** mm<sup>2</sup>

**TITLE:** JACKSCREW DATAMATE  
MIXED TECHNOLOGY  
SOLDER FEMALE ASSEMBLY

**DRAWING NUMBER:**  
**M80-4000000F5-06-327-00-000**

SHT  
2 OF 2