

Customer Information Sheet

IF IN DOUBT - ASK

©

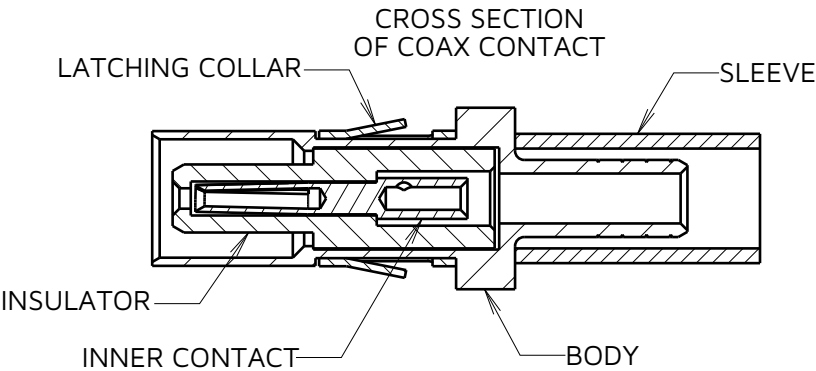
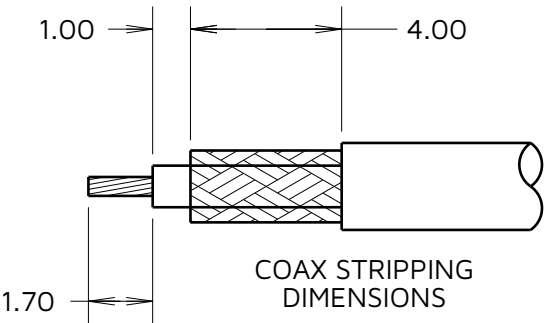
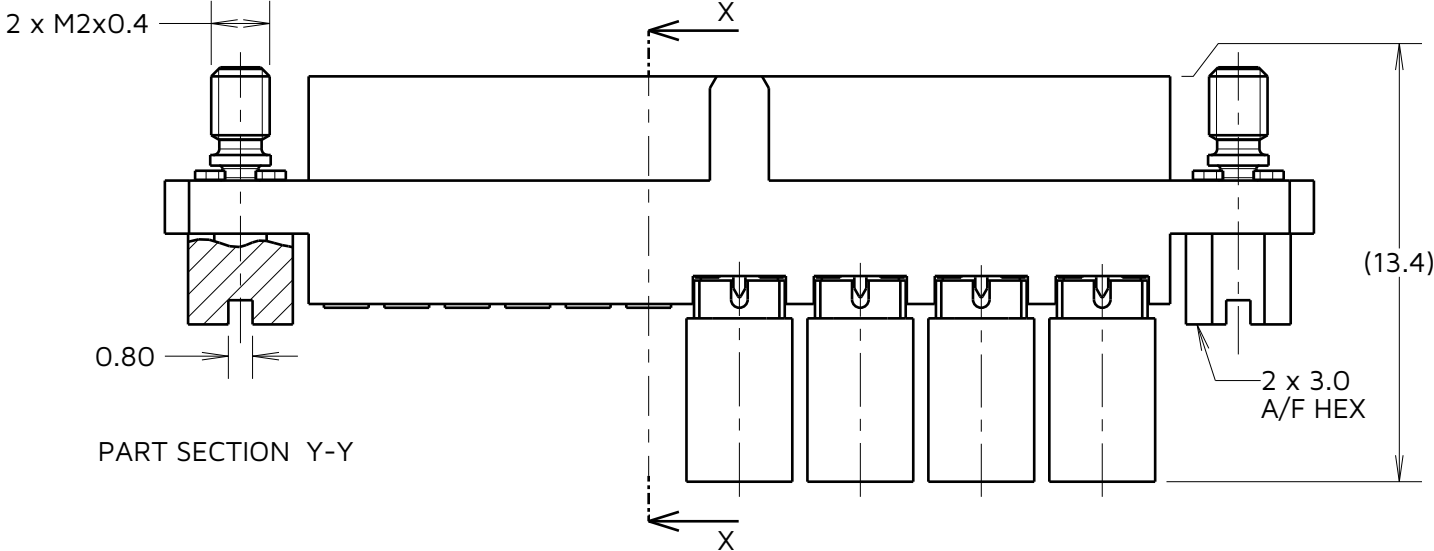
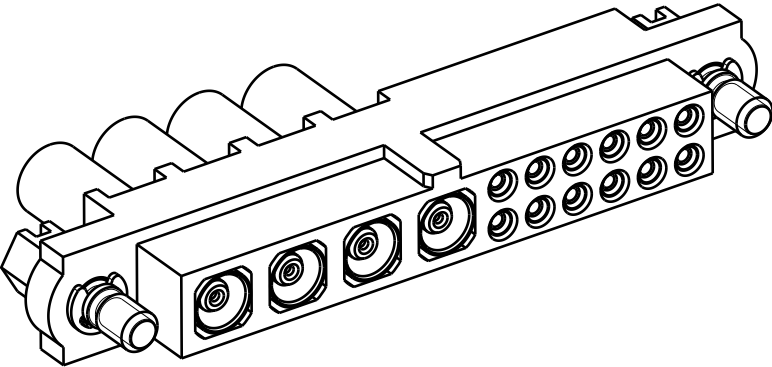
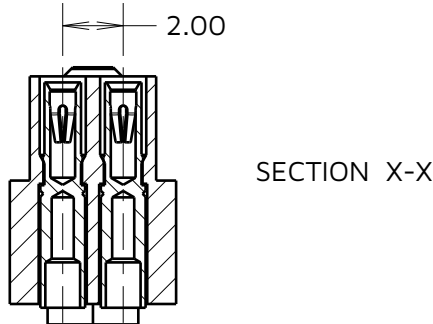
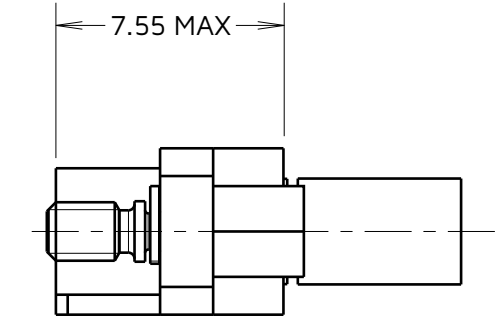
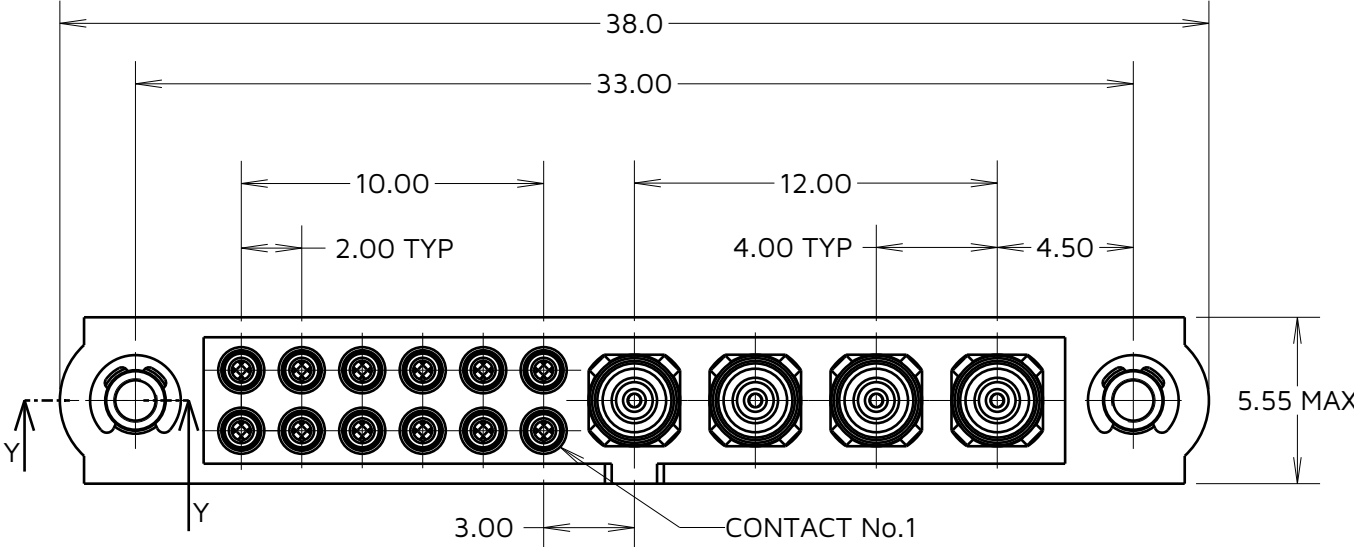
NOT TO SCALE

THIRD ANGLE PROJECTION

ALL DIMENSIONS IN mm

SPECIFICATIONS:

MATERIAL:
HOUSING: GLASS FILLED PPS, UL94V-0, BLACK
SIGNAL CONTACT:
CLIP = BERYLIUM COPPER
SHELL = COPPER ALLOY
COAX CONTACT:
BODY, SLEEVE = COPPER ALLOY
INNER CONTACT, LATCHING COLLAR = BERYLIUM COPPER
INSULATOR = PTFE
JACKSCREW, CIRCLIP: STAINLESS STEEL
FINISH:
SIGNAL CONTACT:
CLIP = 0.3µ GOLD OVER NICKEL
SHELL = 3.5-5.0µ 100% TIN OVER NICKEL
COAX CONTACT:
BODY, SLEEVE, INNER CONTACT = GOLD OVER NICKEL
LATCHING COLLAR = NICKEL
PACKING:
BAG
FOR COMPLETE SPECIFICATION SEE COMPONENT SPECIFICATION C005XX (LATEST ISSUE)



- NOTES:
- CONNECTORS ARE SUPPLIED WITH CONTACTS LOOSE.
 - FOR EXTRA SIGNAL CONTACTS, USE PART NUMBER M80-0130001.
 - RECOMMENDED SIGNAL WIRE TYPE = SEE COMPONENT SPEC C049XX (LATEST ISSUE). MAX INSULATION DIAMETER = Ø1.10mm. STRIP WIRE BY 2.00mm FOR CRIMPING.
 - RECOMMENDED HAND CRIMP TOOL FOR SIGNAL CONTACTS = M22520/2-01 WITH POSITIONER T5747. REFER TO TOOLING INSTRUCTION SHEET IS-01 FOR COMPLETE CRIMPING INSTRUCTIONS.
 - SIGNAL CONTACT INSERTION AND EXTRACTION TOOL = Z80-280. REFER TO TOOLING INSTRUCTION SHEET IS-25 FOR ASSEMBLY INSTRUCTIONS.
 - COAX CONTACT IS SUPPLIED AS A KIT OF PARTS: BODY, INSULATOR AND LATCHING COLLAR ARE PRE-ASSEMBLED AND SLEEVE AND INNER CONTACT ARE SEPARATE.
 - FOR EXTRA COAX CONTACTS, USE PART NUMBER M80-307.
 - RECOMMENDED HAND CRIMP TOOL FOR COAX INNER CONTACT = Z80-292 WITH POSITIONER Z80-291 AND RECOMMENDED HAND CRIMP TOOL AND DIE SET FOR COAX SLEEVE = Z80-293. REFER TO TOOLING INSTRUCTION SHEET IS-34 FOR CRIMPING INSTRUCTIONS.
 - COAX CONTACT EXTRACTION TOOL = Z80-290. REFER TO TOOLING INSTRUCTION SHEET IS-52 FOR INSERTION AND REMOVAL INSTRUCTIONS.

AB	1	04.10.23	-----
NAME	ISS.	DATE	CN/CO
APPROVED: W.J.PRESTON			
CHECKED: R.PORTLOCK			
DRAWN: A.BOXALL			
ASSEMBLY DRG:			

HARWIN

www.harwin.com

TOLERANCES
X. = ±1mm
X.X = ±0.50mm
X.XX = ±0.20mm
X.XXX = ±0.01mm
ANGLES = ±5°
UNLESS STATED

THIS DRAWING AND ANY INFORMATION OR DESCRIPTIVE MATTER SET OUT HEREON ARE CONFIDENTIAL AND COPYRIGHT PROPERTY OF THE HARWIN GROUP AND MUST NOT BE DISCLOSED, LOANED, COPIED OR USED FOR MANUFACTURING, TENDERING OR FOR ANY OTHER PURPOSE WITHOUT THEIR WRITTEN PERMISSION.

MATERIAL:

SEE ABOVE

TITLE: JACKSCREW DATAMATE MIXED TECHNOLOGY CRIMP FEMALE ASSEMBLY

DRAWING NUMBER:
M80-4C11242F1-04-307-00-000

SHT
2
OF
2