

# Customer Information Sheet

IF IN DOUBT - ASK

©

NOT TO SCALE

THIRD ANGLE PROJECTION

ALL DIMENSIONS IN mm

SPECIFICATIONS:  
MATERIAL:  
HOUSING = GLASS-FILLED PPS, UL94V-0, BLACK  
CONTACT = BRASS  
101LOK RETAINER = STAINLESS STEEL  
  
FINISH  
CONTACT = GOLD

PACKING:  
BAG  
FOR COMPLETE SPECIFICATION, SEE COMPONENT  
SPECIFICATION C005XX (LATEST ISSUE)

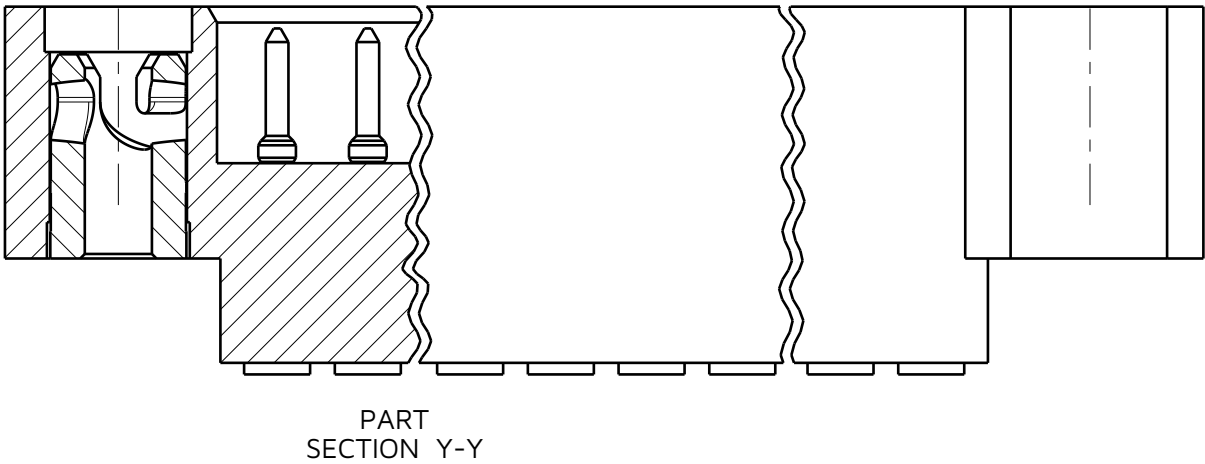
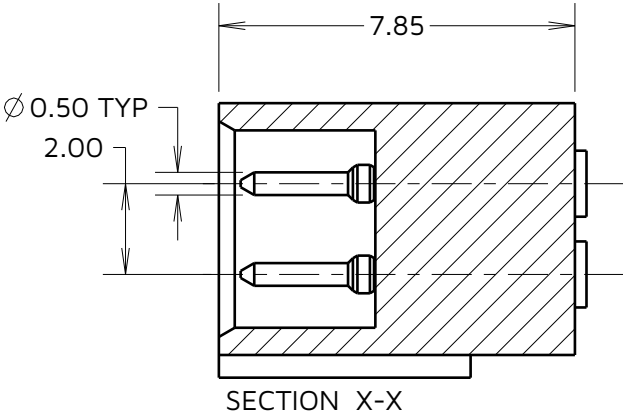
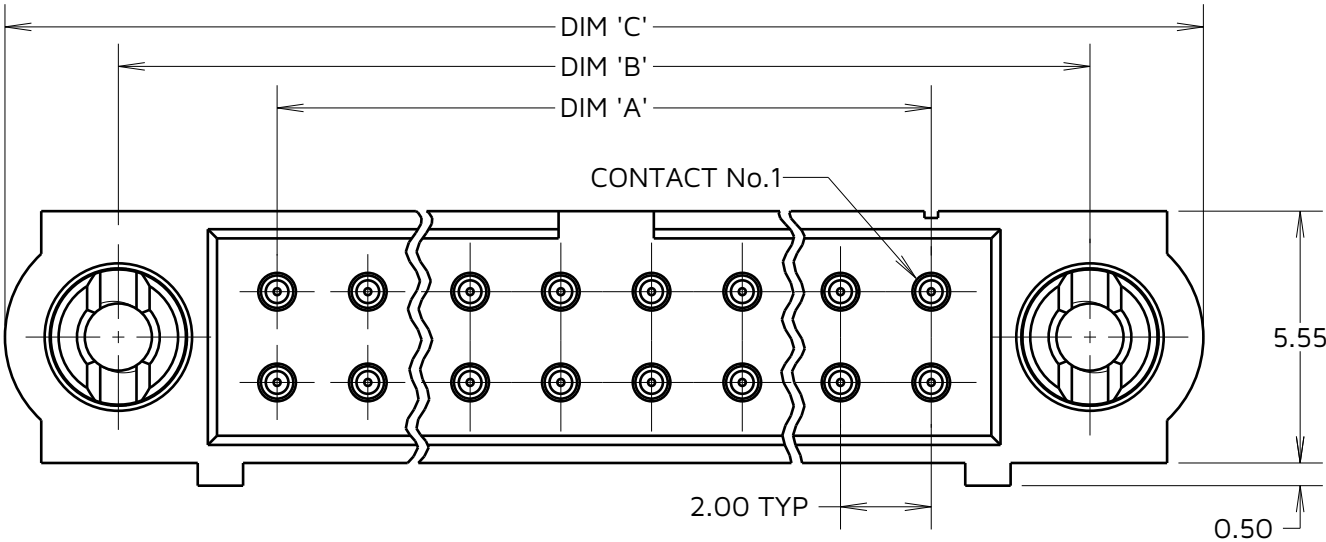
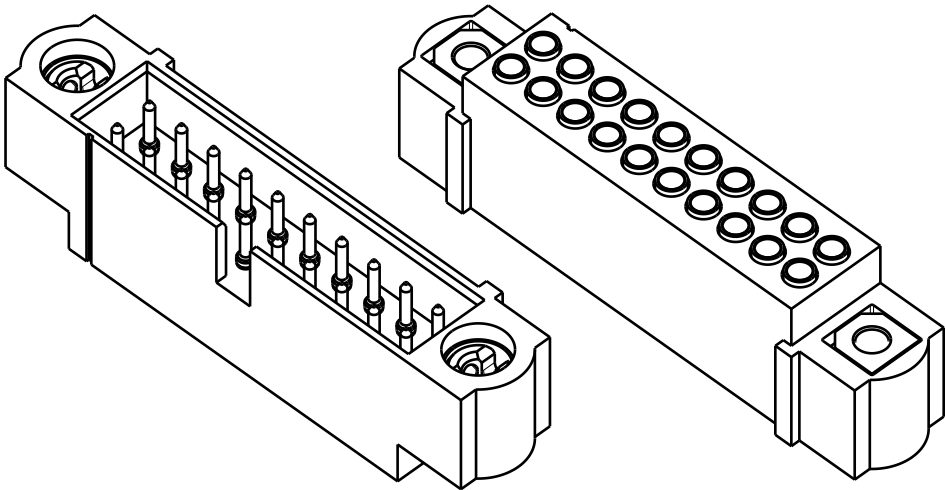


TABLE 1: DIMENSION VARIANTS			
PART No.	DIM 'A'	DIM 'B'	DIM 'C'
M80-5C10405MC	2.00	3.50	4.5
M80-5C10605MC	4.00	5.50	6.5
M80-5C10805MC	6.00	7.50	8.5
M80-5C11005MC	8.00	9.50	10.5
M80-5C11205MC	10.00	11.50	12.5
M80-5C11405MC	12.00	13.50	14.5
M80-5C11605MC	14.00	15.50	16.5
M80-5C11805MC	16.00	17.50	18.5
M80-5C12005MC	18.00	19.50	20.5
M80-5C12205MC	20.00	21.50	22.5
M80-5C12405MC	22.00	23.50	24.5
M80-5C12605MC	24.00	25.50	26.5
M80-5C12805MC	26.00	27.50	28.5
M80-5C13005MC	28.00	29.50	30.5
M80-5C13205MC	30.00	31.50	32.5
M80-5C13405MC	32.00	33.50	34.5
M80-5C13605MC	34.00	35.50	36.5
M80-5C13805MC	36.00	37.50	38.5
M80-5C14005MC	38.00	39.50	40.5
M80-5C14205MC	40.00	41.50	42.5
M80-5C14405MC	42.00	43.50	44.5
M80-5C14605MC	44.00	45.50	46.5
M80-5C14805MC	46.00	47.50	48.5
M80-5C15005MC	48.00	49.50	50.5

ORDER CODE:  
**M80-5C1XX05MC**  
TOTAL No. OF CONTACTS 04 TO 50  
(EVEN NUMBERS ONLY)

NOTES:  
1. CONNECTORS ARE SUPPLIED WITH CONTACTS LOOSE.  
2. FOR EXTRA CONTACTS, USE PART NUMBER M80-1950005.  
3. RECOMMENDED WIRE TYPE = BS 3G 210 TYPE A, PTFE INSULATED 24-28 AWG.  
MAX INSULATION DIAMETER = Ø1.10mm,STRIP WIRE BY 2.00mm.  
4. RECOMMENDED HAND CRIMP TOOL = M22520/2-01 WITH POSITIONER Z80-193  
5. CONTACT INSERTION AND EXTRACTION TOOL = Z80-280.  
6. INSTRUCTION SHEETS ARE AVAILABLE.  
7. PART M80-5C11605MC SHOWN FOR ILLUSTRATION ONLY.

**HARWIN**  
www.harwin.com

TOLERANCES  
X. = ±1mm  
X.X = ±0.50mm  
X.XX = ±0.20mm  
X.XXX = ±0.01mm  
ANGLES = ±5°  
UNLESS STATED

THIS DRAWING AND ANY  
INFORMATION OR DESCRIPTIVE  
MATTER SET OUT HEREON ARE  
CONFIDENTIAL AND COPYRIGHT  
PROPERTY OF THE HARWIN GROUP  
AND MUST NOT BE DISCLOSED,  
LOANED, COPIED OR USED FOR  
MANUFACTURING, TENDERING OR FOR  
ANY OTHER PURPOSE WITHOUT THEIR  
WRITTEN PERMISSION.

MATERIAL:  
  
SEE ABOVE

TITLE: **DATAMATE J-TEK  
DIL CRIMP (SMALL BORE) MALE  
ASSY WITH 101LOK RETAINERS**  
DRAWING NUMBER: **M80-5C1XX05MC**  
SHT 2 OF 2

JD	3	12.09.24	34310
NAME	ISS.	DATE	CN/CO
APPROVED:		J.DEAN	
CHECKED:		A.YEOMANS	
DRAWN:		S. MCCULLAGH	