

# Customer Information Sheet

DRAWING No.: M80-5L10405M5-02-333-02-333

SHEET 2 OF 2

IF IN DOUBT - ASK

©

NOT TO SCALE

THIRD ANGLE PROJECTION

ALL DIMENSIONS IN mm

## SPECIFICATIONS:

**MATERIAL:**  
MOULDING: GLASS FILLED PPS, UL94V-0, BLACK  
SIGNAL CONTACT: PHOSPHOR BRONZE  
POWER CONTACT: COPPER ALLOY  
JACKSCREW, SCREW: STAINLESS STEEL

**FINISH:**  
SIGNAL CONTACT:  
0.75µ GOLD  
POWER CONTACT: GOLD

**ELECTRICAL:**  
WORKING VOLTAGE = 800V AC/DC  
VOLTAGE PROOF = 1200V AC/DC  
INSULATION RESISTANCE = 100MΩ MIN

**SIGNAL CONTACT:**  
CURRENT RATING AT 25°C = 3.0A MAX  
CURRENT RATING AT 85°C = 2.2A MAX  
CONTACT RESISTANCE = 25mΩ MAX

**POWER CONTACT:**  
CONTACT RESISTANCE 6mΩ MAX  
CURRENT RATING = 20A MAX

**MECHANICAL:**  
DURABILITY = 500 OPERATIONS

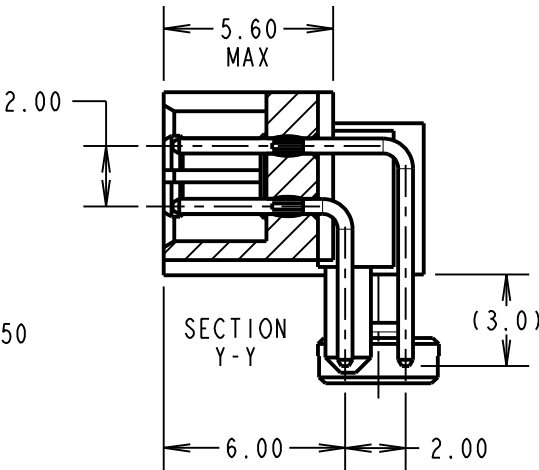
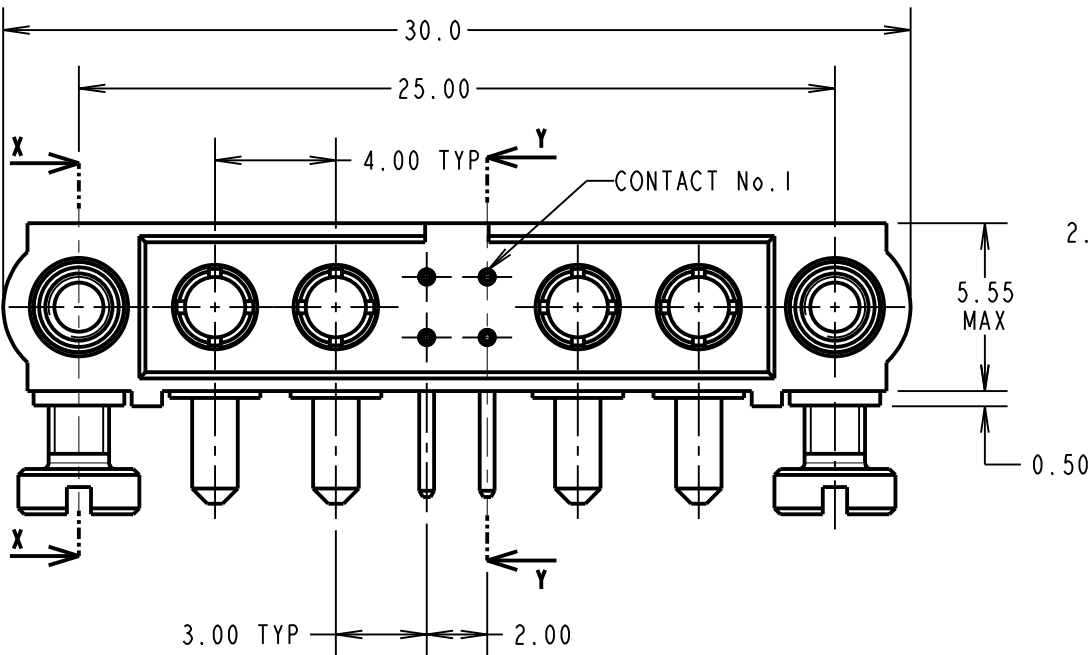
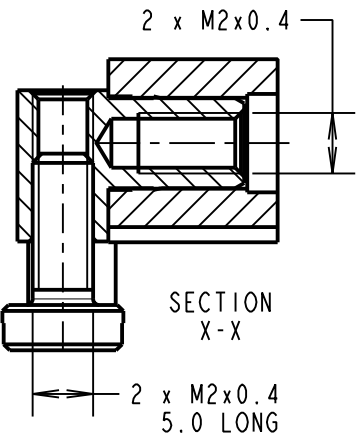
**SIGNAL CONTACT:**  
INSERTION FORCE = 2.0N MAX  
WITHDRAWAL FORCE = 0.2N MIN

**POWER CONTACT:**  
INSERTION FORCE = 8N MAX  
WITHDRAWAL FORCE = 0.5N MIN

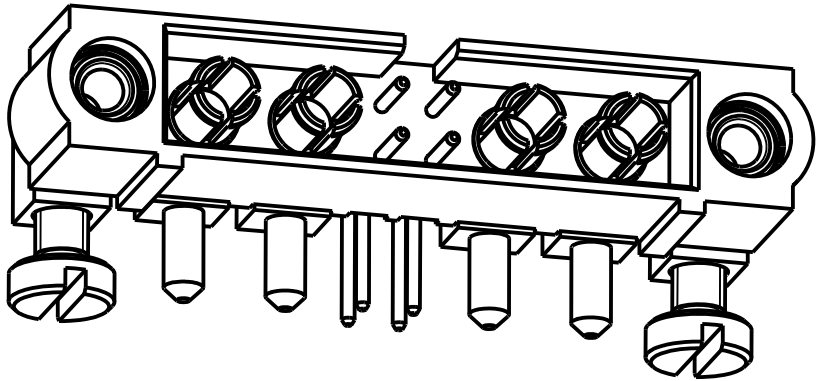
**ENVIRONMENTAL:**  
TEMPERATURE RANGE = -55°C TO +125°C

**PACKING:**  
TUBE

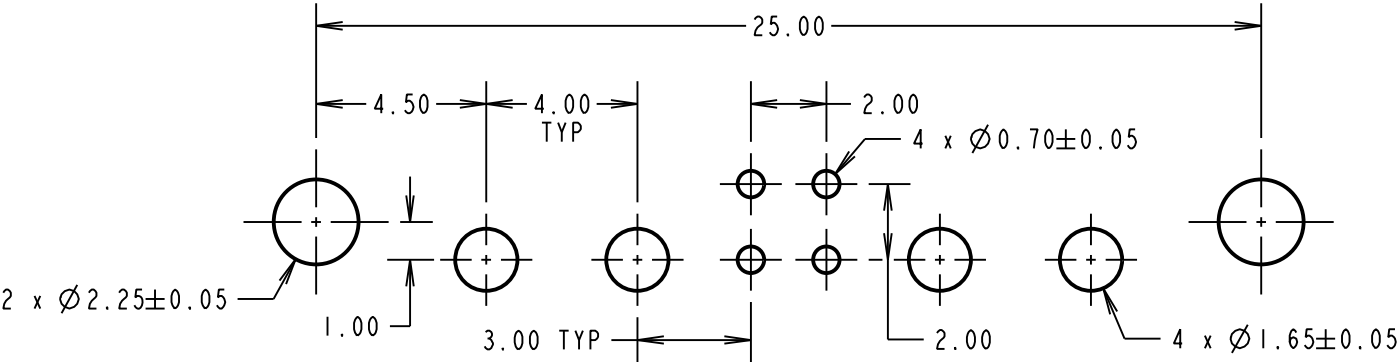
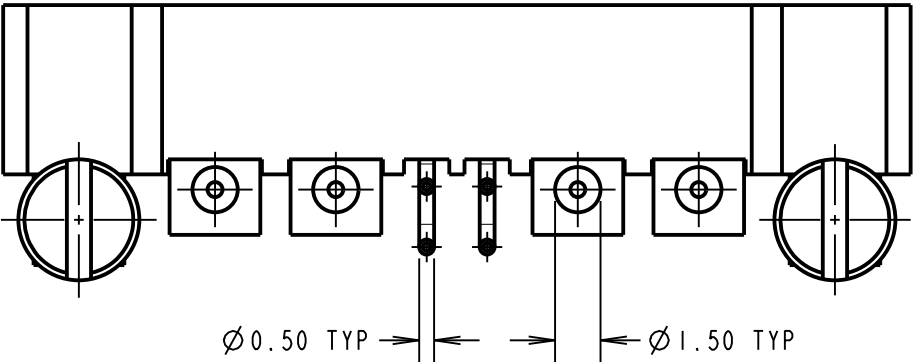
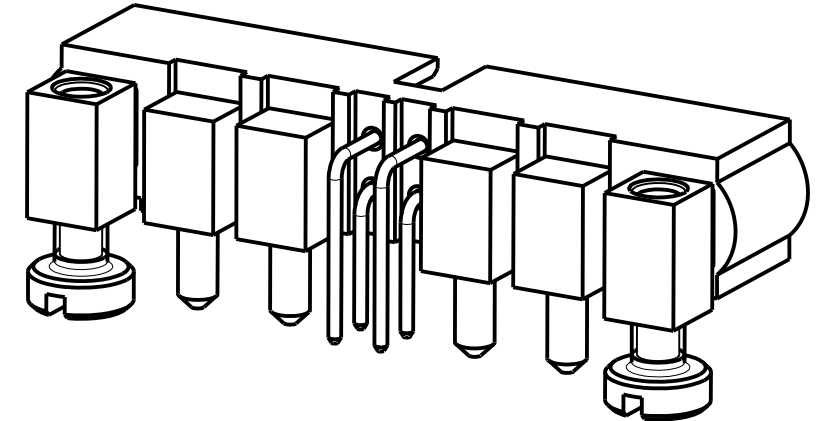
FOR COMPLETE SPECIFICATION SEE COMPONENT SPECIFICATION C005XX (LATEST ISSUE)



NOTES:  
1. CONNECTORS ARE SUPPLIED WITH SCREWS LOOSE.



COMPLETE ASSEMBLY SHOWN FOR ILLUSTRATION ONLY



RECOMMENDED PCB LAYOUT

LS	2	13.10.17	13269
NAME	ISS.	DATE	C/NOTE
APPROVED: LS			
CHECKED: SB			
DRAWN: M. G. PLESTED			
CUSTOMER REF.:			
ASSEMBLY DRG:			

**HARWIN**

www.harwin.com  
technical@harwin.com

THIS DRAWING AND ANY INFORMATION OR DESCRIPTIVE MATTER SET OUT HEREON ARE CONFIDENTIAL AND COPYRIGHT PROPERTY OF THE HARWIN GROUP AND MUST NOT BE DISCLOSED, LOANED, COPIED OR USED FOR MANUFACTURING, TENDERING OR FOR ANY OTHER PURPOSE WITHOUT THEIR WRITTEN PERMISSION.

**TOLERANCES**  
X. = ±1mm  
X.X = ±0.50mm  
X.XX = ±0.10mm  
X.XXX = ±0.01mm  
**ANGLES** = ±5°  
**UNLESS STATED**

**MATERIAL:**

SEE ABOVE

**FINISH:**

SEE ABOVE

**S/AREA:**

mm<sup>2</sup>

**TITLE:** JACKSCREW DATAMATE  
MIXED TECHNOLOGY VERTICAL  
PC TAIL MALE ASSEMBLY

**DRAWING NUMBER:**  
M80-5L10405M5-02-333-02-333

SHT  
2 OF 2