

# Customer Information Sheet

DRAWING No.: M80-5L10842M7-02-333-00-000 SHEET 2 OF 2 IF IN DOUBT - ASK © NOT TO SCALE THIRD ANGLE PROJECTION ALL DIMENSIONS IN mm

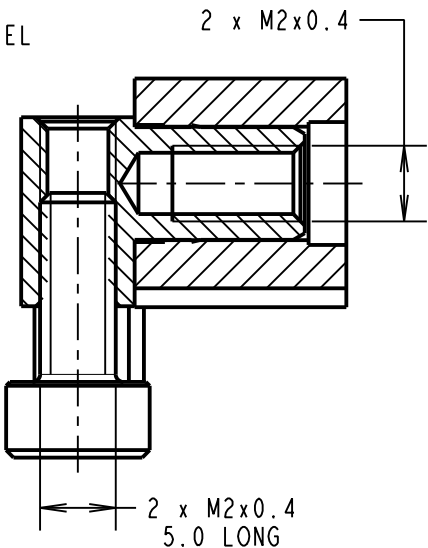
## SPECIFICATIONS:

MATERIAL:  
MOULDING: GLASS FILLED PPS, UL94V-0, BLACK  
SIGNAL CONTACT: PHOSPHOR BRONZE  
POWER CONTACT: BRASS  
BOARD-MOUNT JACKSCREW, SCREW: STAINLESS STEEL

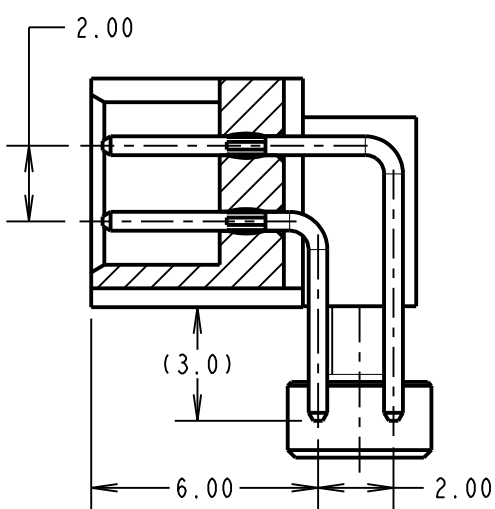
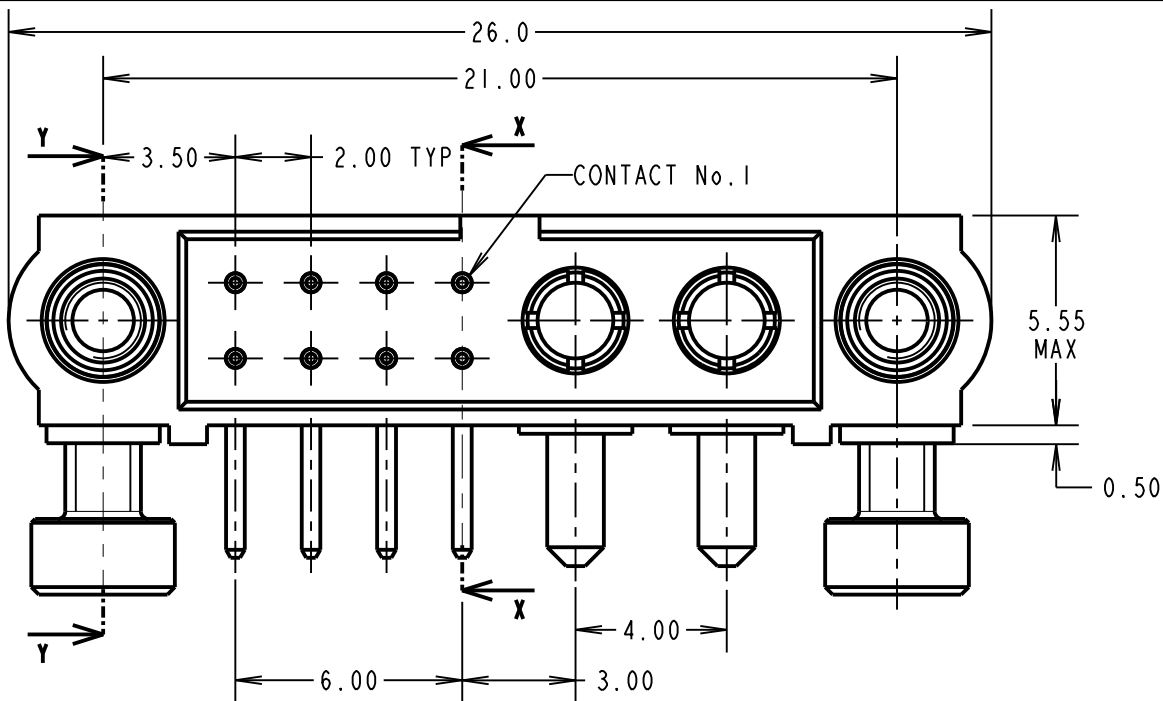
FINISH:  
SIGNAL CONTACT:  
0.75µ GOLD ON CONTACT AREA,  
3µ 100% TIN OVER NICKEL ON TAILS  
POWER CONTACT: GOLD

ELECTRICAL:  
WORKING VOLTAGE = 800V AC/DC  
VOLTAGE PROOF = 1200V AC/DC  
INSULATION RESISTANCE = 100MΩ MIN  
SIGNAL CONTACT:  
CURRENT RATING AT 25°C = 3.0A MAX  
CURRENT RATING AT 85°C = 2.2A MAX  
CONTACT RESISTANCE = 25mΩ MAX  
POWER CONTACT:  
CONTACT RESISTANCE = 6mΩ MAX  
CURRENT RATING = 20A MAX

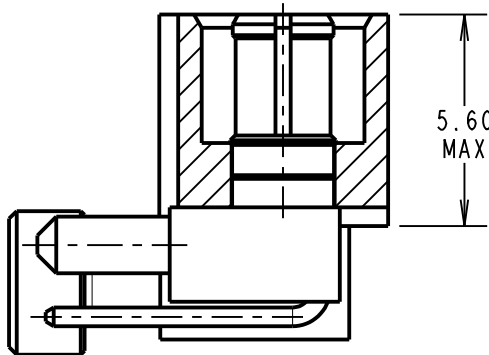
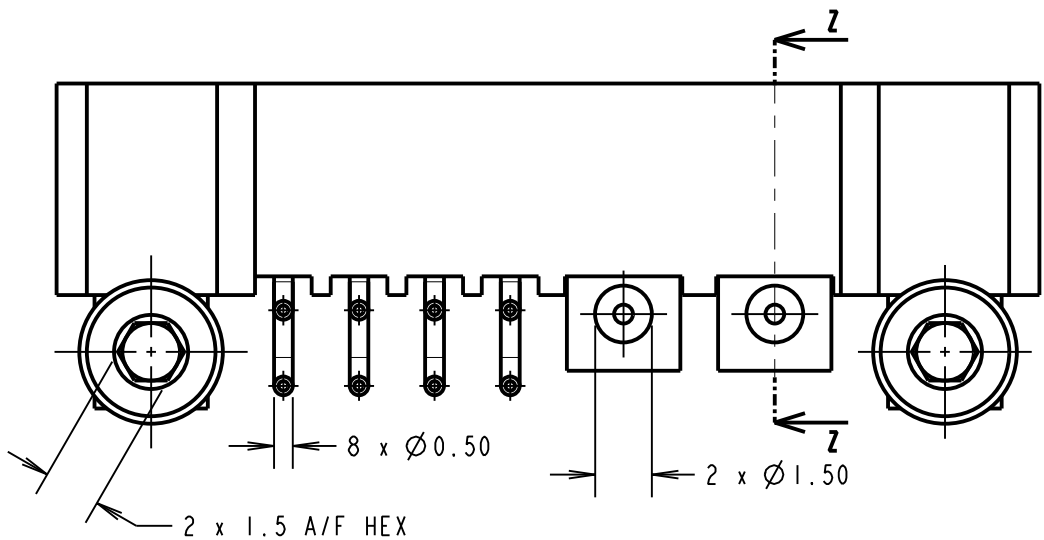
MECHANICAL:  
DURABILITY = 500 OPERATIONS  
SIGNAL CONTACT:  
INSERTION FORCE = 2.0N MAX  
WITHDRAWAL FORCE = 0.2N MIN  
POWER CONTACT:  
INSERTION FORCE = 8N MAX  
WITHDRAWAL FORCE = 0.5N MIN  
ENVIRONMENTAL:  
TEMPERATURE RANGE = -55°C TO +125°C  
PACKING:  
TUBE  
FOR COMPLETE SPECIFICATION SEE COMPONENT  
SPECIFICATION C005XX (LATEST ISSUE)



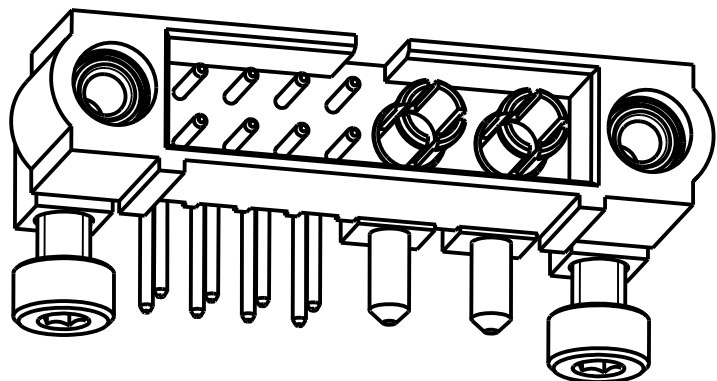
SECTION Y-Y



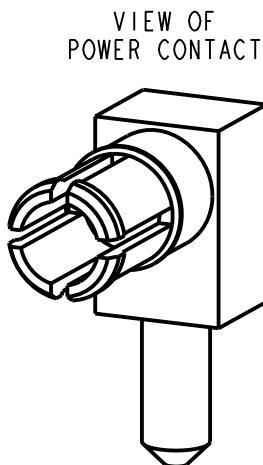
SECTION X-X



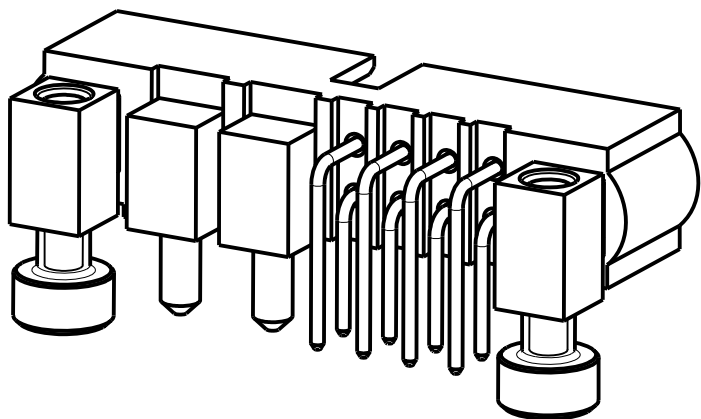
SECTION Z-Z



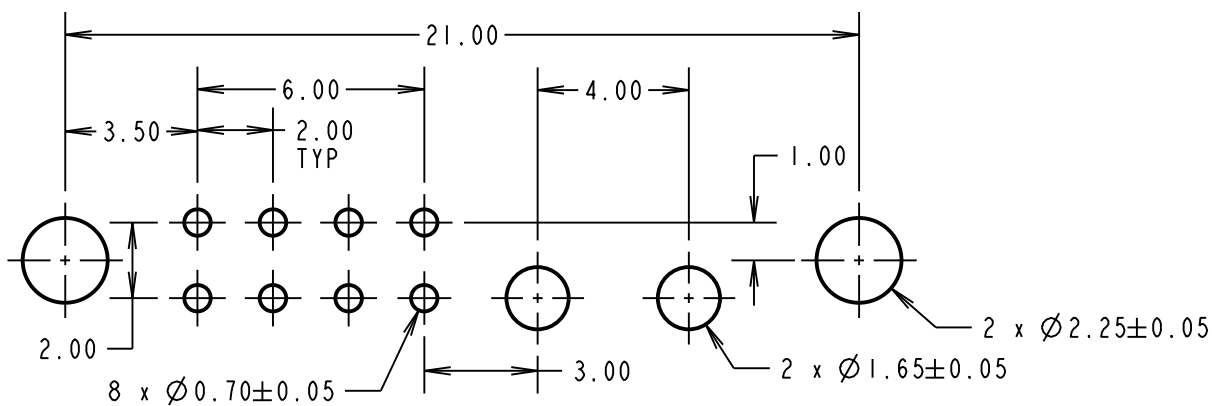
COMPLETE ASSEMBLY SHOWN  
FOR ILLUSTRATION ONLY



VIEW OF  
POWER CONTACT



RECOMMENDED PCB LAYOUT



**HARWIN**

www.harwin.com  
technical@harwin.com

THIS DRAWING AND ANY  
INFORMATION OR DESCRIPTIVE  
MATTER SET OUT HEREON ARE  
CONFIDENTIAL AND COPYRIGHT  
PROPERTY OF THE HARWIN  
GROUP AND MUST NOT BE  
DISCLOSED, LOANED, COPIED  
OR USED FOR MANUFACTURING,  
TENDERING OR FOR ANY  
OTHER PURPOSE WITHOUT  
THEIR WRITTEN PERMISSION.

TOLERANCES  
X. = ±1mm  
X.X = ±0.50mm  
X.XX = ±0.10mm  
X.XXX = ±0.01mm  
ANGLES = ±5°  
UNLESS STATED

MATERIAL:

SEE ABOVE

FINISH:

SEE ABOVE

S/AREA:

mm<sup>2</sup>

TITLE: JACKSCREW DATAMATE  
MIXED TECHNOLOGY  
PC TAIL MALE ASSEMBLY

DRAWING NUMBER:

M80-5L10842M7-02-333-00-000

SHT  
2 OF 2

LS	2	19.10.17	13269
NAME	ISS.	DATE	C/NOTE
APPROVED: LS			
CHECKED: MGP			
DRAWN: S. MCCULLAGH			
CUSTOMER REF.:			
ASSEMBLY DRG:			