

Customer Information Sheet

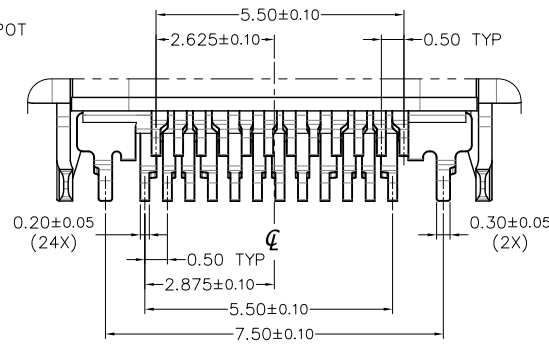
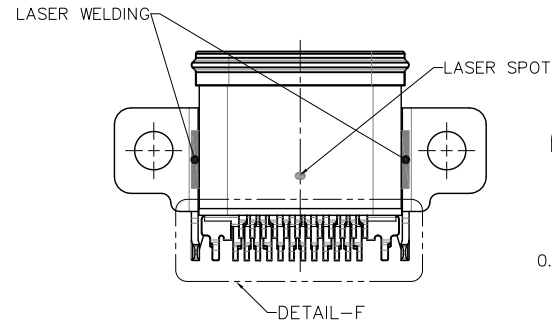
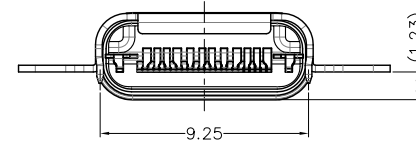
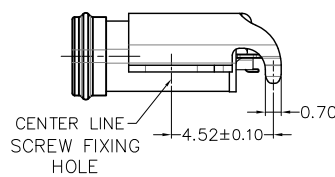
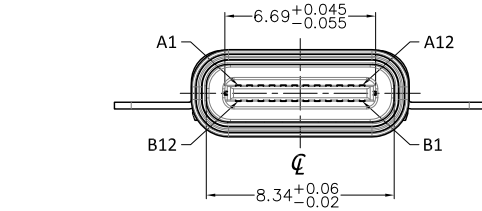
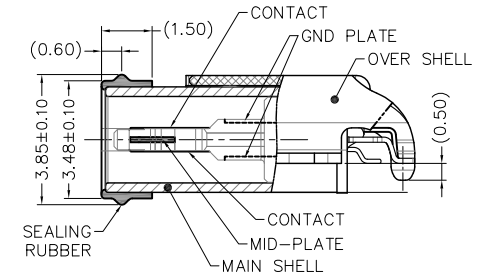
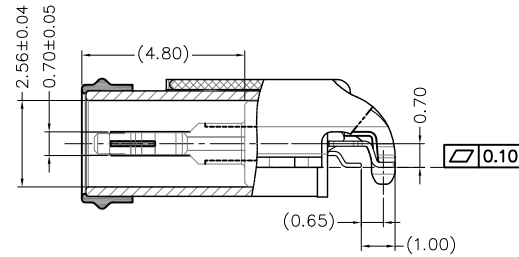
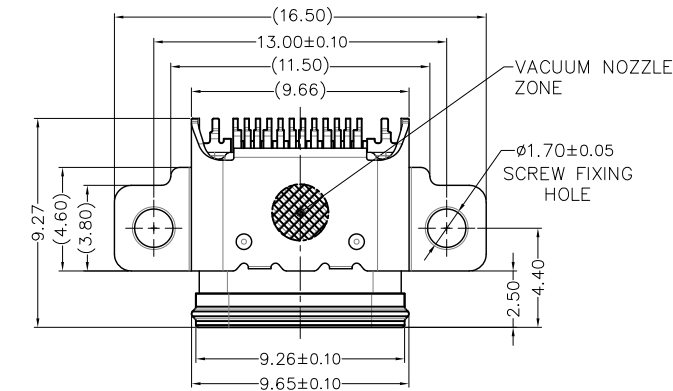
IF IN DOUBT - ASK



NOT TO SCALE

THIRD ANGLE PROJECTION

ALL DIMENSIONS IN mm



DETAIL-F

PIN ASSIGNMENTS

PIN	SIGNAL NAME	PIN	SIGNAL NAME
A1	GND	B12	GND
A2	TX1+	B11	RX1+
A3	TX1-	B10	RX1-
A4	VBUS	B9	VBUS
A5	CC1	B8	SBU2
A6	D+	B7	D-
A7	D-	B6	D+
A8	SBU1	B5	CC2
A9	VBUS	B4	VBUS
A10	RX2-	B3	TX2-
A11	RX2+	B2	TX2+
A12	GND	B1	GND

UNE	1	12JUN25	--
NAME	ISS.	DATE	CN/CO
APPROVED: WALKER / MEIZY			
CHECKED: THIRI			
DRAWN: UNE			

HARWIN

www.harwin.com

TOLERANCES

X. = ±1mm
X.X = ±0.50mm
X.XX = ±0.20mm
X.XXX = ±0.01mm

ANGLES = ±5°
UNLESS STATED

THIS DRAWING AND ANY INFORMATION OR DESCRIPTIVE MATTER SET OUT HEREON ARE CONFIDENTIAL AND COPYRIGHT PROPERTY OF THE HARWIN GROUP AND MUST NOT BE DISCLOSED, LOANED, COPIED OR USED FOR MANUFACTURING, TENDERING OR FOR ANY OTHER PURPOSE WITHOUT THEIR WRITTEN PERMISSION.

MATERIAL & FINISH:

SEE ABOVE

TITLE:

USB Type C Waterproof Female
MID-Mount SMT Solder

DRAWING NUMBER:

MMUSBC-3224BF-MMWPO2-XXX

SHT
1
OF
4

Customer Information Sheet

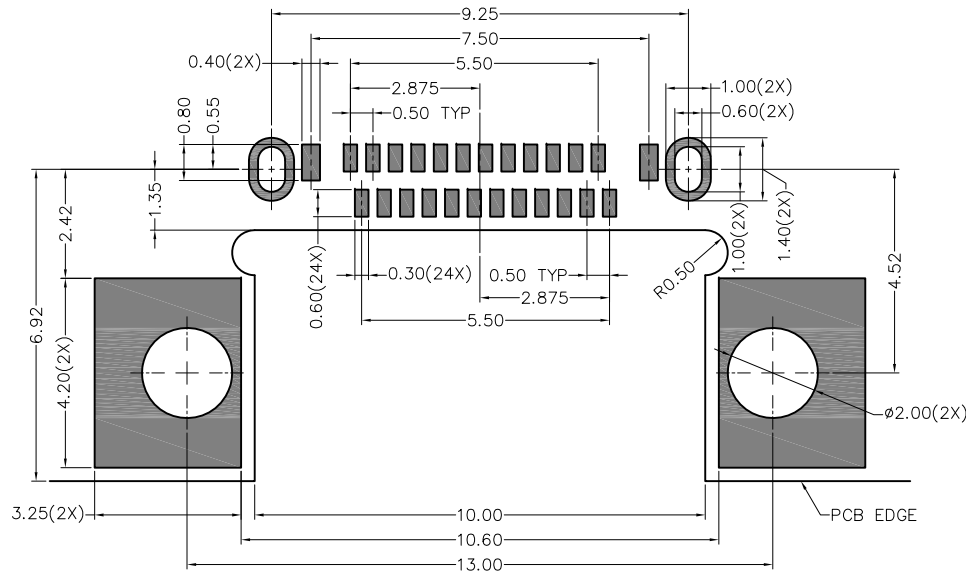
IF IN DOUBT - ASK



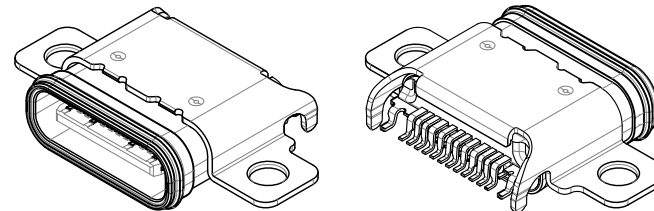
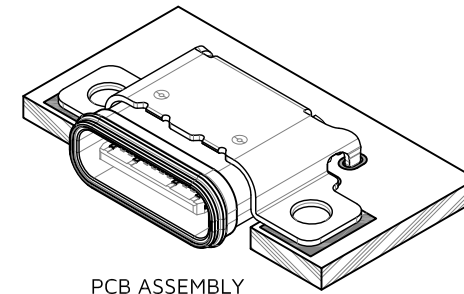
NOT TO SCALE

THIRD ANGLE PROJECTION

ALL DIMENSIONS IN mm



RECOMMENDED PCB LAYOUT (TOP VIEW)
DEFULT TOLERANCE $\pm 0.05\text{mm}$



UNE	1	12JUN25	--
NAME	ISS.	DATE	CN/CO
APPROVED: WALKER / MEIZY			
CHECKED: THIRI			
DRAWN: UNE			

HARWIN

www.harwin.com

TOLERANCES

X. = $\pm 1\text{mm}$
X.X = $\pm 0.50\text{mm}$
X.XX = $\pm 0.20\text{mm}$
X.XXX = $\pm 0.01\text{mm}$

ANGLES = $\pm 5^\circ$
UNLESS STATED

THIS DRAWING AND ANY INFORMATION OR DESCRIPTIVE MATTER SET OUT HEREON ARE CONFIDENTIAL AND COPYRIGHT PROPERTY OF THE HARWIN GROUP AND MUST NOT BE DISCLOSED, LOANED, COPIED OR USED FOR MANUFACTURING, TENDERING OR FOR ANY OTHER PURPOSE WITHOUT THEIR WRITTEN PERMISSION.

MATERIAL & FINISH:

SEE ABOVE

TITLE:

USB Type C Waterproof Female
MID-Mount SMT Solder

DRAWING NUMBER:

MMUSBC-3224BF-MMWP02-XXX

SHT
2
OF
4

Customer Information Sheet

IF IN DOUBT - ASK



NOT TO SCALE

THIRD ANGLE PROJECTION

ALL DIMENSIONS IN mm

NOTES:

1. MATERIAL

- 1.1 HOUSING: LCP, HIGH-TEMP, UL94V-0 BLACK
- 1.2 CONTACT: COPPER ALLOY (T=0.12MM)
- 1.3 MID PLATE: STAINLESS STEEL (T=0.15MM)
- 1.4 GND PLATE: STAINLESS STEEL (T=0.10MM)
- 1.5 MAIN SHELL: STAINLESS STEEL (T=0.30MM)
- 1.6 COVER SHELL: STAINLESS STEEL (T=0.30MM)
- 1.7 RUBBER: SI, COLOR: BLACK

2. PLATING

- 2.1 TERMINAL: Au ON CONTACT AREA (SEE ORDER CODE)
Au 1μ" MIN. ON SOLDER TAIL
Ni 50μ" MIN. UNDERPLATED OVERALL
- 2.2 MID PLATE: Ni 50μ" MIN. / Au 1μ" MIN. ON SOLDER TAIL
- 2.3 GND PLATE: CLEANING
- 2.4 MAIN SHELL: CLEANING
- 2.5 COVER SHELL: Ni 50μ" MIN.

3. ELECTRICAL REQUIREMENTS

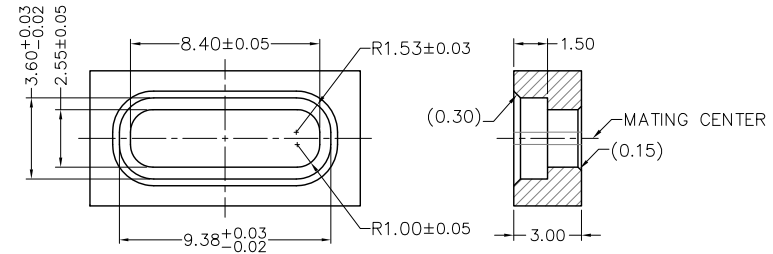
- 3.1 CURRENT RATING: 5A FOR TOTAL VBUS PIN
1.25A FOR VCONN PIN
0.25A FOR OTHERS PIN
- 3.2 CURRENT VOLTAGE: 30V
- 3.3 CONTACT RESISTANCE: 40mΩ MAX. (INITIAL)
50mΩ MAX. (AFTER TEST)
- 3.4 INSULATION RESISTANCE: 100MΩ MIN.
- 3.5 WITHSTANDING VOLTAGE: 100VAC

4. MECHANICAL REQUIREMENTS

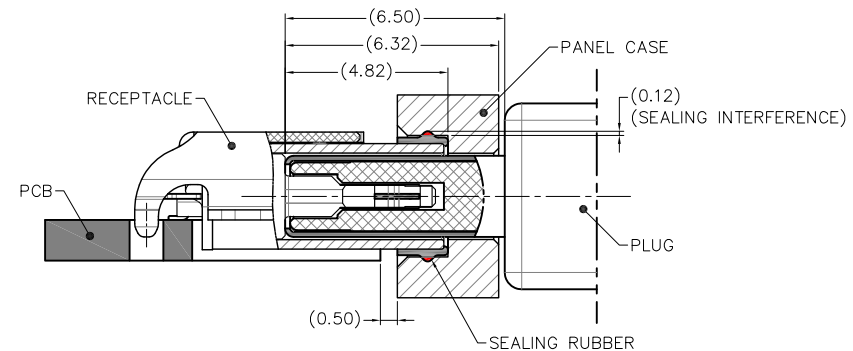
- 4.1 MATING FORCE: 5N~20N
- 4.2 UNMATING FORCE: 8N~20N (INITIAL)
6N~20N (AFTER TEST)
- 4.3 DURABILITY: 10,000 CYCLES

5. OTHERS

- 5.1 OPERATING TEMPERATURE: -40°~+85°
- 5.2 WATERPROOF GRADE: IPX8 (1.5M DEPTH / 30 MINUTES)



RECOMMENDED PANEL CASE HOLE



PANEL CASE INSTALLATION INFORMATION

ORDERING CODE

MMUSBC-3224BF-MMWPO2-XXX

CONTACT PLATING

F01: Gold 1μ " Min.
F05: Gold 5μ "
F30: Gold 30μ "

UNE	1	12JUN25	--
NAME	ISS.	DATE	CN/CO
APPROVED: WALKER / MEIZY			
CHECKED: THIRI			
DRAWN: UNE			

HARWIN

www.harwin.com

TOLERANCES

X. = ±1mm
X.X = ±0.50mm
X.XX = ±0.20mm
X.XXX = ±0.01mm

ANGLES = ±5°
UNLESS STATED

THIS DRAWING AND ANY INFORMATION OR DESCRIPTIVE MATTER SET OUT HEREON ARE CONFIDENTIAL AND COPYRIGHT PROPERTY OF THE HARWIN GROUP AND MUST NOT BE DISCLOSED, LOANED, COPIED OR USED FOR MANUFACTURING, TENDERING OR FOR ANY OTHER PURPOSE WITHOUT THEIR WRITTEN PERMISSION.

MATERIAL & FINISH:

SEE ABOVE

TITLE:

USB Type C Waterproof Female
MID-Mount SMT Solder

DRAWING NUMBER:

MMUSBC-3224BF-MMWPO2-XXX

SHT
3
OF
4

Customer Information Sheet

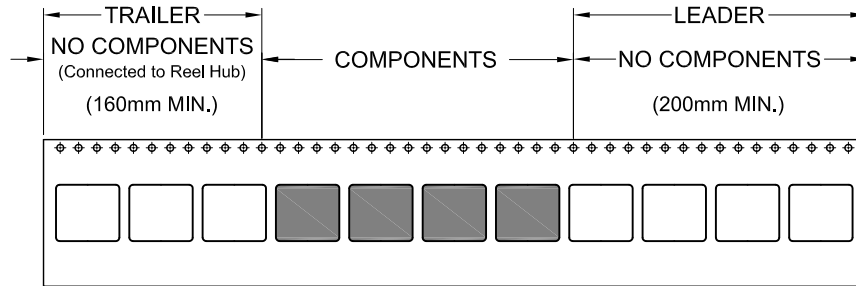
IF IN DOUBT - ASK



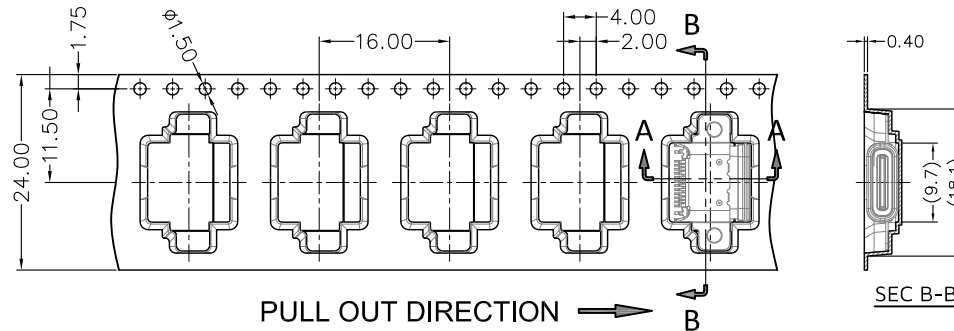
NOT TO SCALE

THIRD ANGLE PROJECTION

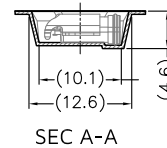
ALL DIMENSIONS IN mm



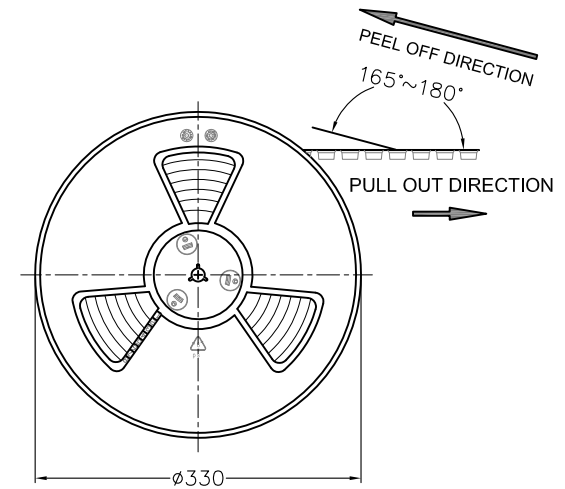
PULL OUT DIRECTION →



PULL OUT DIRECTION →



SEC A-A



NOTE:

1. DIMENSION:

CARTON: L=350, W=350, H=325

2. QUANTITY:

900 PCS / REEL

9,000 PCS / CARTON

UNE	1	12JUN25	--
NAME	ISS.	DATE	CN/CO
APPROVED: WALKER / MEIZY			
CHECKED: THIRI			
DRAWN: UNE			

HARWIN

www.harwin.com

TOLERANCES

X. = $\pm 1\text{mm}$
X.X = $\pm 0.50\text{mm}$
X.XX = $\pm 0.20\text{mm}$
X.XXX = $\pm 0.01\text{mm}$

ANGLES = $\pm 5^\circ$
UNLESS STATED

THIS DRAWING AND ANY INFORMATION OR DESCRIPTIVE MATTER SET OUT HEREON ARE CONFIDENTIAL AND COPYRIGHT PROPERTY OF THE HARWIN GROUP AND MUST NOT BE DISCLOSED, LOANED, COPIED OR USED FOR MANUFACTURING, TENDERING OR FOR ANY OTHER PURPOSE WITHOUT THEIR WRITTEN PERMISSION.

MATERIAL & FINISH:

SEE ABOVE

TITLE:

USB Type C Waterproof Female
MID-Mount SMT Solder

DRAWING NUMBER:

MMUSBC-3224BF-MMWPO2-XXX

SHT
4
OF
4